

5 Hollister Place Carlingford, NSW



### First Time Offered in about 45 Years ? Spacious Family Entertainer in Prime Carlingford Location

Proudly held and lovingly maintained for over four decades, this exceptional family home presents an incredibly rare opportunity in one of Carlingford's most tightly held pockets. Set on a generous 872sqm (approx.) block in a quiet cul-de-sac, this versatile residence offers space, comfort, and convenience in equal measure-perfect for growing families or multi-generational living.

From its charming street appeal to its beautifully updated interiors and expansive outdoor entertaining areas, every corner of this home reflects thoughtful care and practical design. Positioned within the catchment of highly sought-after schools including Murray Farm Public School and Muirfield High, and only moments to a variety of transport options, this is a lifestyle location like no other.

Price: \$2,210,000



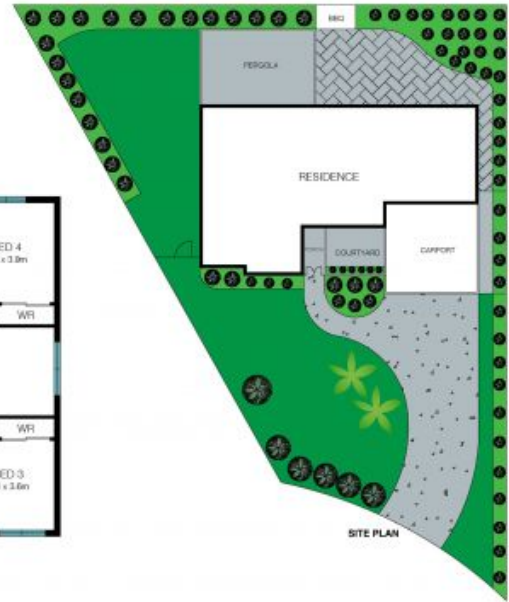
**Danny Jing**

0430 025 586



**Graham Black**

0400 381 217



The floor plan is not to scale, measurements are indicative and in metres. Detail elements are not in position. Plans should not be relied on. Interested parties should make and rely on their own enquiries.

## 5 Hollister Place, Carlingford

