



STONE



STONE



STONE



STONE

8/48A Oxford Street Epping, NSW



### Bright, Private and Spacious with Everything at Your Doorstep

Bathed in natural sunlight and designed to generous proportions, this solid full-brick two-bedroom unit in the boutique complex of only 14 with great strata, boasts effortless living in an exceptionally convenient location. Just a short 3-minute walk to Epping Station, it provides easy access to Metro, trains and buses, while also being moments from Coles, local shops and vibrant eateries. Ideal for families, professionals or downsizers seeking space, comfort and lifestyle, all in one total package.

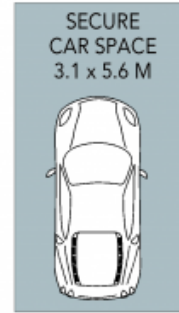
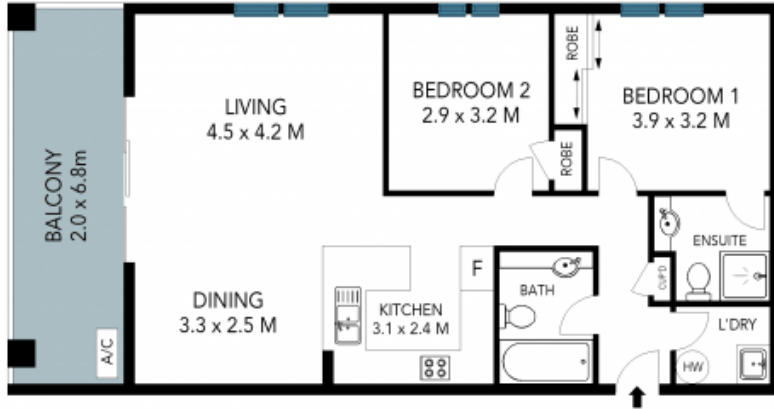
**Price:** Auction - Price on Request  
**Council Rates:** \$299.00 p/q  
**Water Rates:** \$171.00 p/q  
**Strata Rates:** \$1,284.00 p/q



**Vincent Goh**

0412 316 797

8/48A Oxford Street,  
Epping



The site plan and floor plan are not to scale; measurements are indicative and in metres. Bushes and trees are placed for illustration purposes. Plans should not be relied on. Interested parties should make and rely on their own enquiries. All other information provided has been collected from reliable sources but cannot be guaranteed for accuracy.