



10 Corella Place Boambee East, NSW

3

2

2

Stunning Toscan-Built Home

Expertly crafted by Toscan Homes, this beautifully rendered residence is a true standout in both design and presentation. From the moment you step through the elegant cedar door and ascend the winding wrought iron staircase, you're welcomed into a spacious open-plan layout featuring a light-filled lounge, dining area, and kitchen.

The sleek kitchen is a showstopper, boasting high-gloss cabinetry, marble-look benchtops, premium appliances including a gas cooktop, and a Miele dishwasher-perfect for both everyday living and entertaining.

This home offers three generously sized bedrooms, each with ceiling fans, including a luxurious master bedroom complete with a private ensuite. The main living space flows effortlessly onto a large, undercover timber deck at the front-ideal for relaxing or entertaining while enjoying the elevated outlook.

Additional highlights include:

- A second undercover rear deck and low-maintenance, fully fenced backyard
- Full insulation in both roof and walls
- North-east facing orientation to capture cooling summer breezes

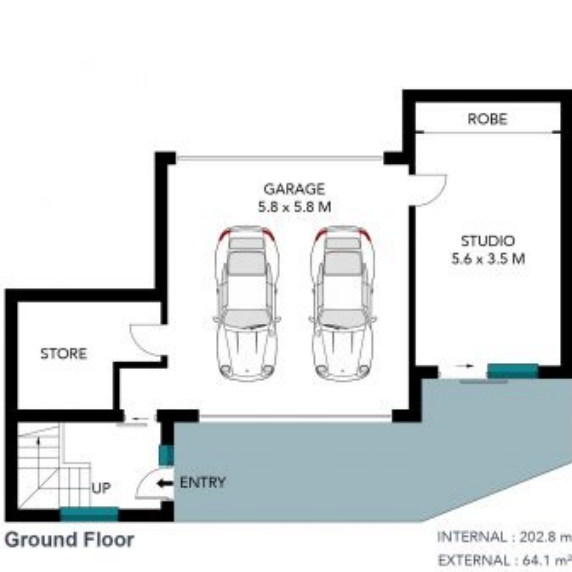
Price: \$775,000
Council Rates: \$795.00 p/q



Yvette Ward

0403 602 544

10 Corella Pl
Boambee East, NSW 2452



The site plan and floor plan are not to scale; measurements are indicative and in metres. Bushes and trees are placed for illustration purposes. Plans should not be relied on. Interested parties should make and rely on their own enquiries. All other information provided has been collected from reliable sources but cannot be guaranteed for accuracy.