

102/49 The Esplanade Ettalong Beach, NSW



North-Facing Coastal Apartment in the Heart of Ettalong

Perfectly positioned at the iconic Atlantis Ettalong Beach, this modern north-facing apartment delivers effortless coastal living with resort-style amenities. Featuring two generous bedrooms, two bathrooms and light-filled open-plan living flowing to a sun-drenched balcony, this is a rare opportunity to secure lifestyle, convenience and long-term appeal.

Inspect: Saturday, 23rd May 2026 10:30 - 11:00

Price: \$875,000
Council Rates: \$1,212.59/year (approx)
Water Rates: \$287.03 p/q
Strata Rates: \$1,250.00 p/q



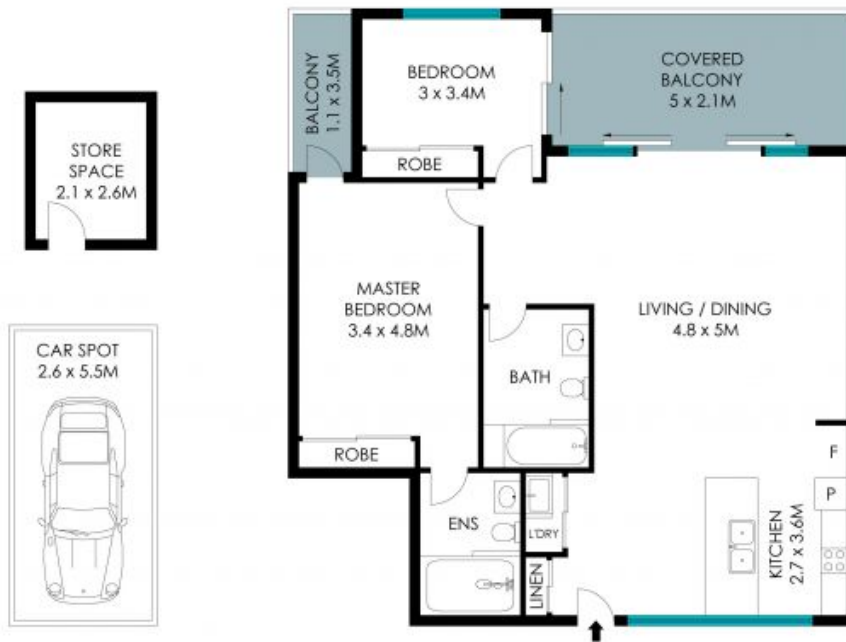
Helen Hughes

0418 220 622



Christel Renton

0417 208 314



Total Living Area: 130 sqm

The site plan and floor plan are not to scale; measurements are indicative and in metres. Bushes and trees are placed for illustration purposes. Plans should not be relied on. Interested parties should make and rely on their own enquiries. All other information provided has been collected from reliable sources but cannot be guaranteed for accuracy.