



27C Haywood Close Wetherill Park, NSW

3

1

1

Low maintenance home with a north to rear aspect

Positioned with a sought-after north to rear aspect, this family home provides a low maintenance lifestyle at a convenient address. It's set in a quiet cul-de-sac close to local schools, Wetherill Park TAFE and Stockland Wetherill Park Shopping Centre.

- Three bedrooms, each well appointed with built-in wardrobes
- Versatile undercover alfresco entertaining area or carport
- Renovated main bathroom, internal laundry with extra w/c
- Easycare kitchen equipped with gas cooktop, ample storage
- Dining room enjoys access to sun drenched outdoor setting
- Expansive backyard basks in desirable northerly sunshine
- Features include air conditioning and a single lock-up garage
- Footsteps to local buses, handy to Emerson Street Reserve



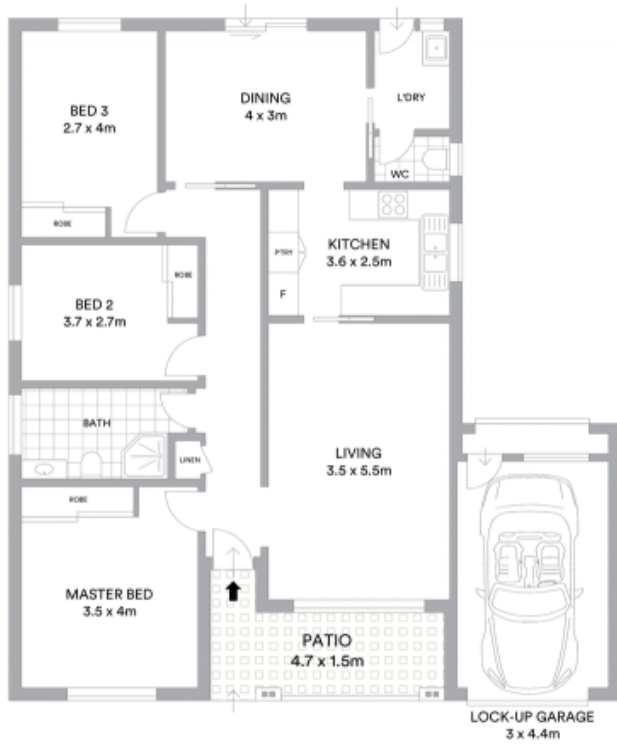
Frank Bartolone

0411 477 758



Angela McInerney

0435 348 141



McGrath

Scale in metres. Indicative only. All information contained herein is obtained from sources we believe to be accurate. We cannot guarantee its accuracy. Interested persons should make and rely on their own enquiries