

5 Warragamba Crescent Bossley Park, NSW

3 

3 

2 

### Beautifully maintained family home in an ideal location

This beautifully presented family home is ideally focused on family living. This large double brick quality home has an extremely generous layout assuring a lifestyle of comfort and convenience on 560sqm, peacefully located across from Warragamba Reserve.

- Versatile layout includes formal lounge/dining and rumpus
- Generous sized kitchen with gas cooking, quality appliances
- Large balcony off kitchen for entertaining with district views
- Master bed has built-ins robe and ensuite, other beds with built-ins
- Master bedroom with private balcony and sweeping city views
- Formal dining, study or the possibility of a having a fourth bedroom
- Main bathroom with spa, formal lounge with wood fire heater
- Large cellar, under home storage and separate office



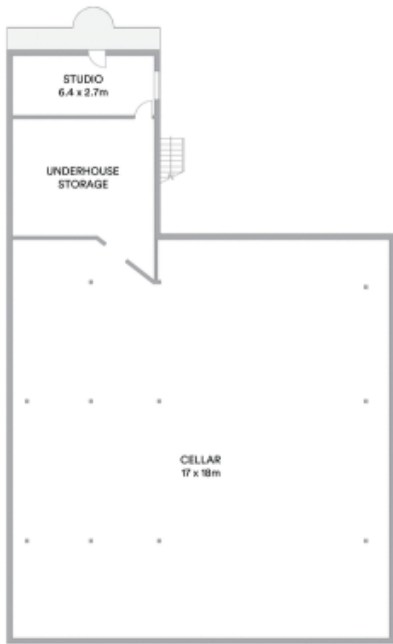
**Frank Bartolone**

0411 477 758



**Angela McInerney**

0435 348 141



LOWER LEVEL



ENTRY LEVEL



UPPER LEVEL



**McGrath**

Scale in metres. Indicative only. All information contained herein is obtained from sources we believe to be accurate. We cannot guarantee its accuracy. Interested persons should make and rely on their own enquiries