

16/12 Goulburn Street Warwick Farm, NSW 2 1 1

Top floor apartment nestled in convenient locale

Enhanced by comfortable finishes and contemporary appeal, this top floor apartment provides low maintenance living in a convenient address. It's in a gated complex within walking distance of bus stops, Liverpool Hospital and Warwick Farm train station.

- Neatly presented layout includes an expansive living space
- Dining zone features seamless outdoor flow to balcony area
- Tidy kitchen appointed with dishwasher and tiled splashback
- Two well proportioned bedrooms complete with built-in robes
- Fully renovated bathroom with floor-to-ceiling tiles and bath
- Air conditioning, internal laundry, single lock-up garage
- Located minutes away from Westfield shopping Liverpool
- Offers easy access to University, TAFE making idea investment



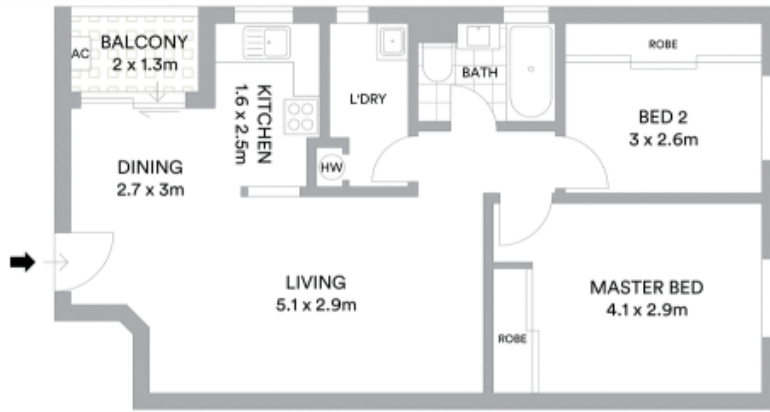
Glen Craigie

0401 529 930

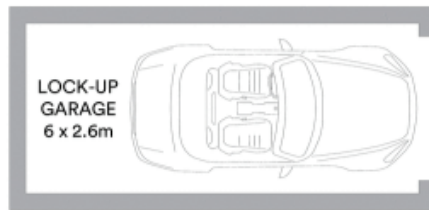


Glen Craigie

0401 529 930



TOP LEVEL



GROUND LEVEL



McGrath

Scale in metres. Indicative only. All information contained herein is obtained from sources we believe to be accurate. We cannot guarantee its accuracy. Interested persons should make and rely on their own enquiries