



18 Saltbush Place Bossley Park, NSW 4 3 2

### Sold By McGrath Estate Agents Liverpool

Superbly crafted with a family focussed design, this immaculate modern residence encourages an environment of spacious living and outdoor entertaining. It's in a peaceful street, moments to transport, schools and Stockland Wetherill Park Shopping Centre.

- Flowing interiors with high ceilings create sense of space
- Wonderful choice of versatile formal and casual living zones
- Large family room enjoys double door flow to alfresco area
- Enjoy hosting family/friends amidst the easycare level lawn
- Sleek black stone kitchen features stainless gas appliances
- Four bedrooms include master with ensuite and private balcony
- Sizeable main bathroom offers separate shower and spa tub
- Study, garden shed, ducted air conditioning and tiled floors



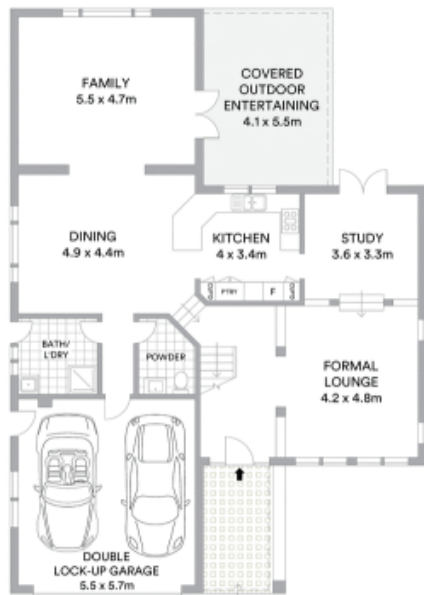
**Frank Bartolone**

0411 477 758



**Angela McInerney**

0435 348 141



GROUND FLOOR



FIRST FLOOR



**McGrath**

Scale in metres. Indicative only. All information contained herein is obtained from sources we believe to be accurate. We cannot guarantee its accuracy. Interested persons should make and rely on their own enquiries.