

9/2 Dotterel Place Ingleburn, NSW



**Sold by Glen Craigie, McGrath Estate Agents**

Relaxed, comfortable and ready to enjoy, this well presented villa ensures a low maintenance lifestyle. It offers direct access through to the doorstep, with close proximity to the cafs, shops, daily amenities and train transport of Ingleburn Village.



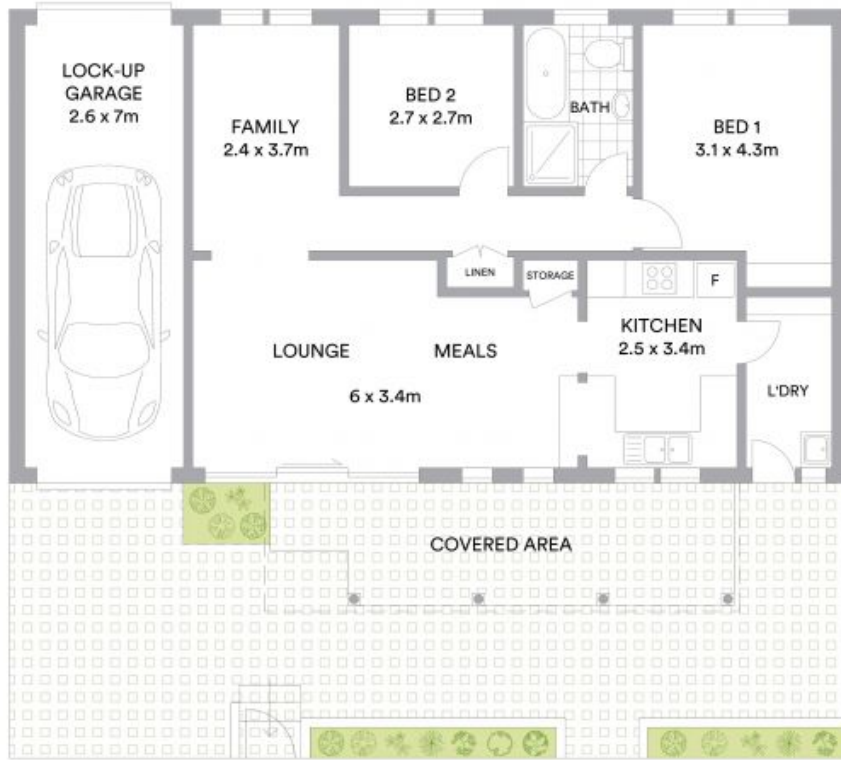
**Glen Craigie**

0401 529 930



**Glen Craigie**

0401 529 930



**McGrath**

Scale in metres. Indicative only. All information contained herein is obtained from sources we believe to be accurate. We cannot guarantee its accuracy. Interested persons should make and rely on their own enquiries.