



45 Renton Avenue Moorebank, NSW

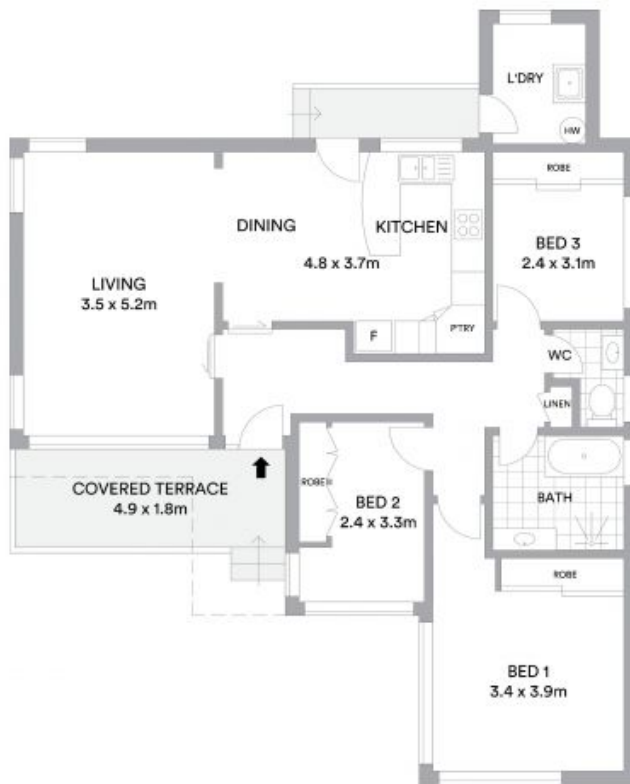


Sold by McGrath Estate Agents Liverpool

Freshly updated, this light filled residence creates broad appeal for families, investors and developers alike. It enjoys district views from a level 664sqm corner block with a 31 metre frontage, handy to schools, Westfield Liverpool and Holsworthy Station.

Stone Real Estate

02 9824 1100
Liverpool



Internal 90sqm
 External 561sqm
 Land area 664sqm

McGrath

Scale in metres. Indicative only. All information contained herein is obtained from sources we believe to be accurate. We cannot guarantee its accuracy. Interested persons should make and rely on their own enquiries.