

26/12-14 George Street Liverpool, NSW

2 2 1

Low maintenance living

Boasting quality inclusions and generous proportions, this 119sqm apartment with a northerly aspect is a sunny retreat for low maintenance living. Its convenient address is within walking distance of Liverpool Station and Westfield Liverpool.

Price: \$425 pw
Bond: \$1,720
Available Date: 07/10/2021



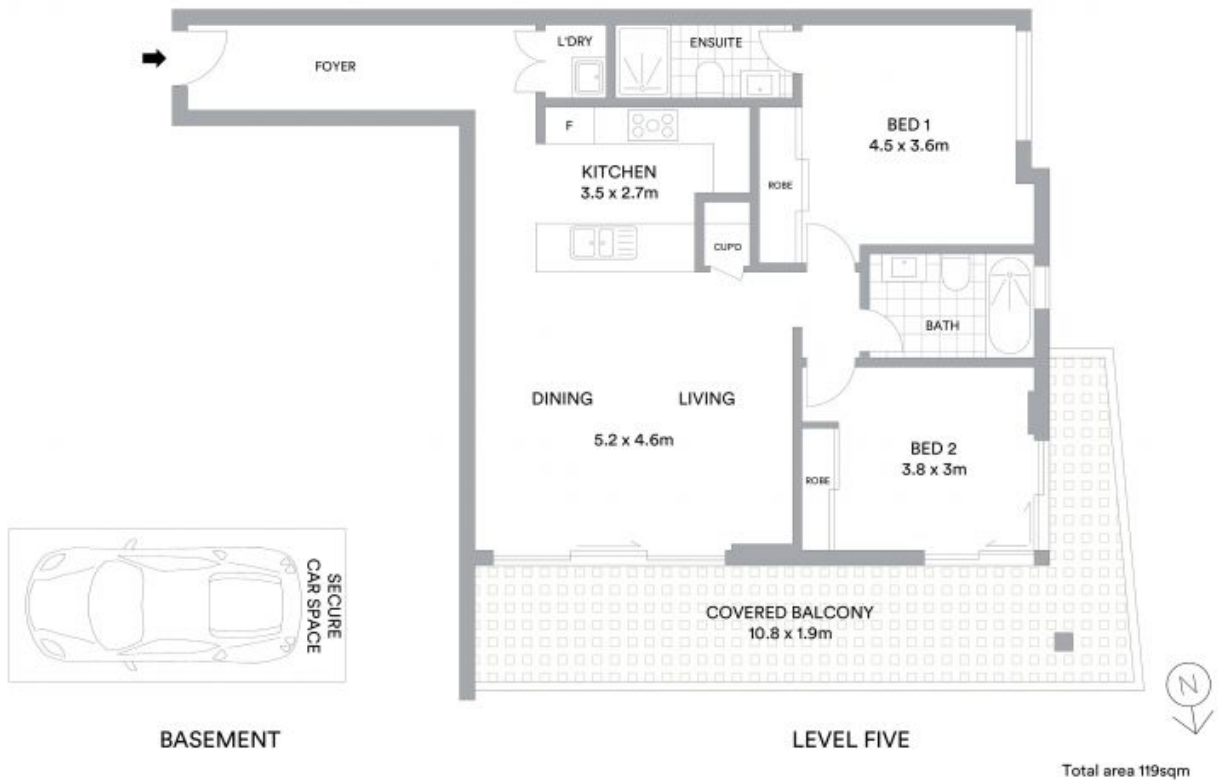
Daniela Simic

0421 164 737



Daniela Simic

0421 164 737



McGrath

Scale in metres. Indicative only. All information contained herein is obtained from sources we believe to be accurate. We cannot guarantee its accuracy. Interested persons should make and rely on their own enquiries.