

26/12-14 George Street Liverpool, NSW

2 2 1

### Low maintenance living

Boasting quality inclusions and generous proportions, this 119sqm apartment with a northerly aspect is a sunny retreat for low maintenance living. Its convenient address is within walking distance of Liverpool Station and Westfield Liverpool.

**Price:** \$425 pw  
**Bond:** \$1,700  
**Available Date:** 15/01/2022



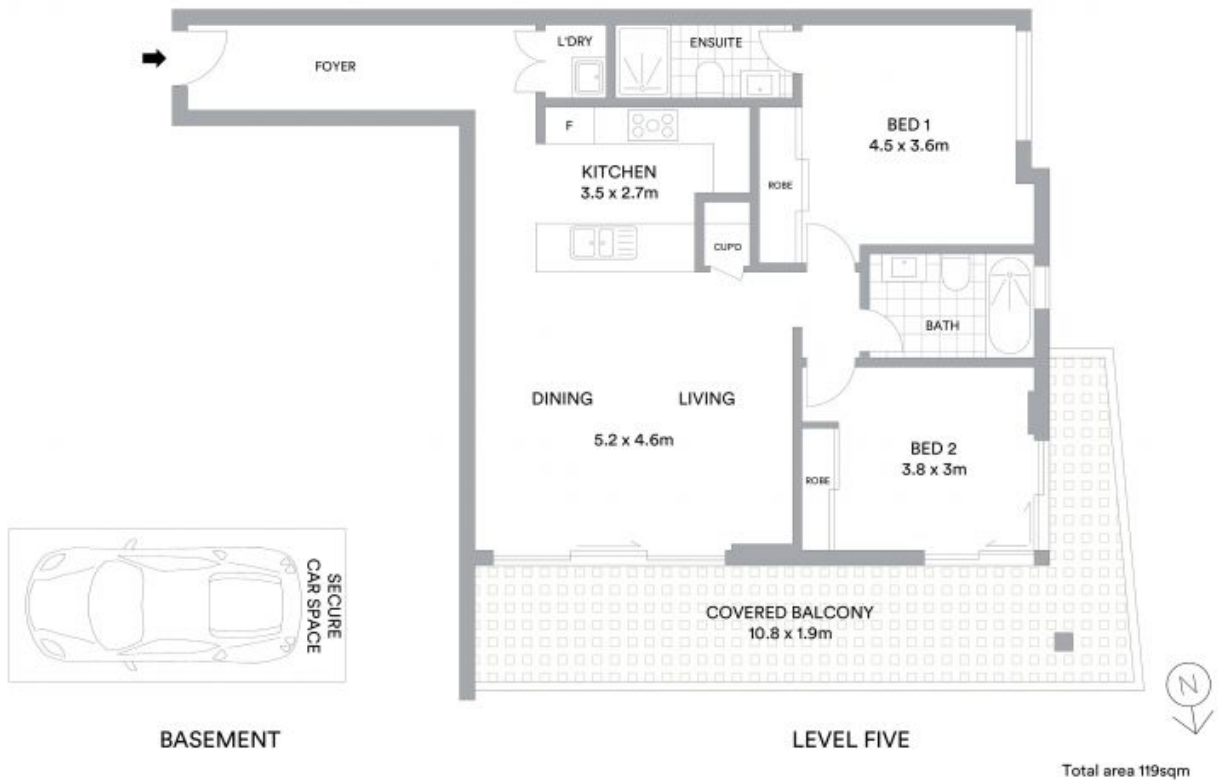
**Daniela Simic**

0421 164 737



**Daniela Simic**

0421 164 737



**McGrath**

Scale in metres. Indicative only. All information contained herein is obtained from sources we believe to be accurate. We cannot guarantee its accuracy. Interested persons should make and rely on their own enquiries.