



148 Guildford Road Guildford, NSW



Sold by Frank Bartolone

Positioned on a 689.2sqm block, this family residence promises a convenient lifestyle opportunity while presenting excellent scope to add further value. Its only a walk away from Woodville Golf Course, local schools, bus services and Guildford Station.



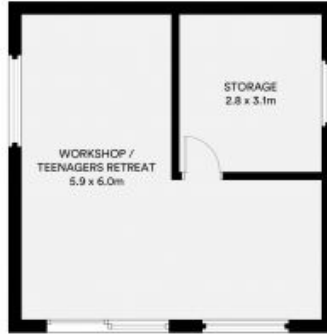
Angela McInerney

0435 348 141



Frank Bartolone

0411 477 758



All information contained in this document is from sources we believe to be accurate, however we cannot guarantee its accuracy. Interested persons should make and rely on their own enquiries in relation to measurements, dimensions, layout, furniture and descriptions.