

2 West Hill Place Green Valley, NSW



### Large family home in convenient location

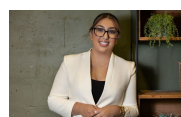
Showcasing an impressive contemporary dual level design, perfect for large families seeking space and convenience. Set close to Green Valley Plaza, Hoxton Park High School, Green Valley Public School and Freeman Catholic College, while being a stroll from popular local reserves.

**Price:** \$800 pw  
**Bond:** \$3,200  
**Available Date:** 28/02/2024



**Daniela Simic**

0421 164 737



**Eevet Arabo**

0402 100 814