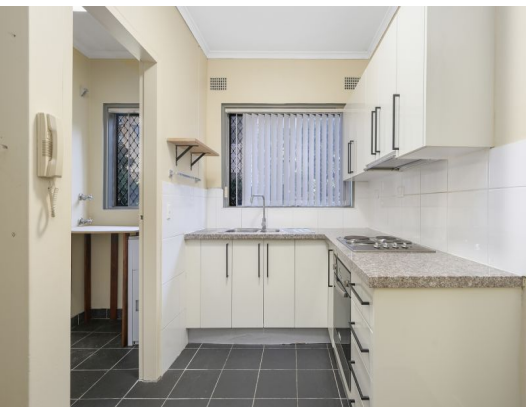


STONE



22/26 Remembrance Avenue Warwick Farm, NSW



Sold by Frank Bartolone

Located in a sought-after yet central complex, offering a unique split level design on the ground floor with minimal stairs. Promising an easy-care lifestyle which is footsteps to Warwick Farm station, public and private hospitals and Liverpool CBD.



Frank Bartolone

0411 477 758



Angela McInerney

0435 348 141



All information contained in this document is from sources we believe to be accurate, however we cannot guarantee its accuracy. Interested persons should make and rely on their own enquiries in relation to measurements, dimensions, layout, furniture and descriptions.



All information contained in this document is from sources we believe to be accurate, however we cannot guarantee its accuracy. Interested persons should make and rely on their own enquiries in relation to measurements, dimensions, layout, furniture and descriptions.