

109 Reservoir Road Mount Pritchard, NSW



Sold by Frank Bartolone

Embracing a bright north to rear aspect on a vast 733.5sqm block, this dual level family home provides abundant space for a comfortable lifestyle. Its only a walk from village shops, eateries, local reserves and buses while close to Westfield Liverpool.



Frank Bartolone

0411 477 758



Angela McInerney

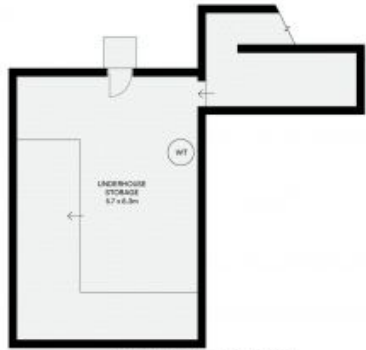
0435 348 141



GROUND LEVEL



UPPER LEVEL
(MIDDLE LEVEL)



LOWER GROUND LEVEL



All information contained in this document is from sources we believe to be accurate, however we cannot guarantee its accuracy. Interested persons should make and rely on their own enquiries in relation to measurements, dimensions, layout, furniture and descriptions.