



304/32 Shepherd Street Liverpool, NSW



### North west facing apartment in secure modern complex

Capturing a radiant northwest aspect, this contemporary apartment delivers a sophisticated convenient lifestyle in 'The Foundry'. It's within The Paper Mill precinct, a walk to parks and Liverpool Station, while close to Westfield Liverpool and eateries.

**Price:** \$550 pw

**Bond:** \$2,200

**Available Date:** 05/08/2024



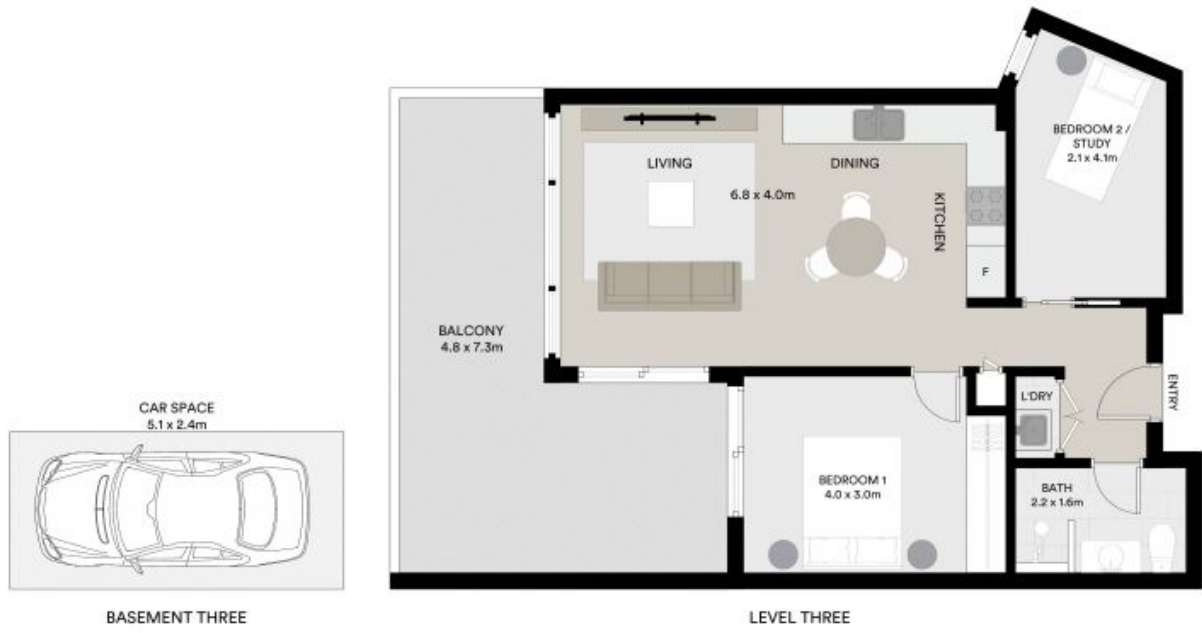
**Daniela Simic**

0421 164 737



**Daniela Simic**

0421 164 737



All information contained in this document is from sources we believe to be accurate, however we cannot guarantee its accuracy. Interested persons should make and rely on their own enquiries in relation to measurements, dimensions, layout, furniture and descriptions.