

22A Graham Avenue Casula, NSW

2 1 1

### Private Granny Flat

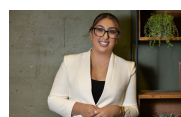
Located within a short stroll to schools and public transport is this great sized private granny flat. Offering an easy care lifestyle of convenience with modern features making it comfortable throughout.

**Price:** \$500 pw  
**Bond:** \$2,000  
**Available Date:** 22/11/2023



**Danielle Reynolds**

0432 790 090



**Eevet Arabo**

0402 100 814