



2 Deerwood Avenue Liverpool, NSW



Sold by Frank Bartolone & Leo Guzman

Enjoying a serene parkside position, this dual level home promises a family-friendly lifestyle of outstanding relaxation. Within close proximity of Liverpool CBD, it ensures easy access to Westfield Liverpool, Liverpool West Public School, transport and handy to Liverpool CBD.



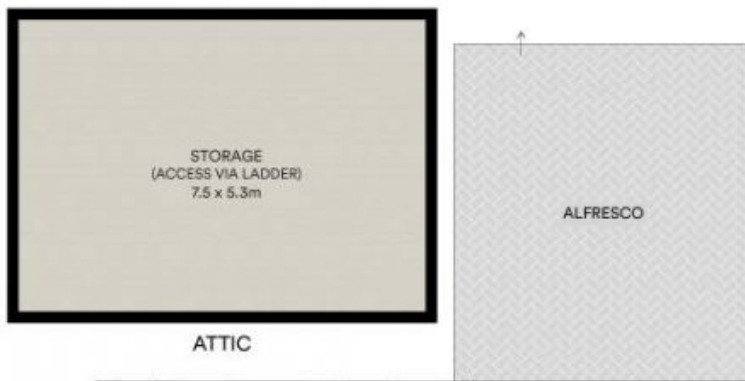
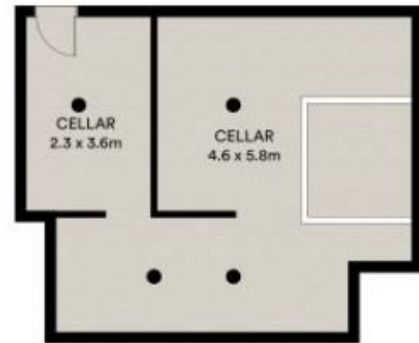
Frank Bartolone

0411 477 758



Frank Bartolone

0411 477 758



All information contained in this document is from sources we believe to be accurate, however we cannot guarantee its accuracy. Interested persons should make and rely on their own enquiries in relation to measurements, dimensions, layout, furniture and descriptions.

INTERNAL AREA: 300M²
 EXTERNAL AREA: 257M²
 LAND SIZE: 557M²