

90/3 Riverpark Drive Liverpool, NSW 2 1 1

Sold by Frank Bartolone

In popular 'Riverpark Estate', this neatly presented apartment is on the second floor with open plan living with balcony access. The complex is near Georges River walkways leading to Liverpool Station and the CBD.



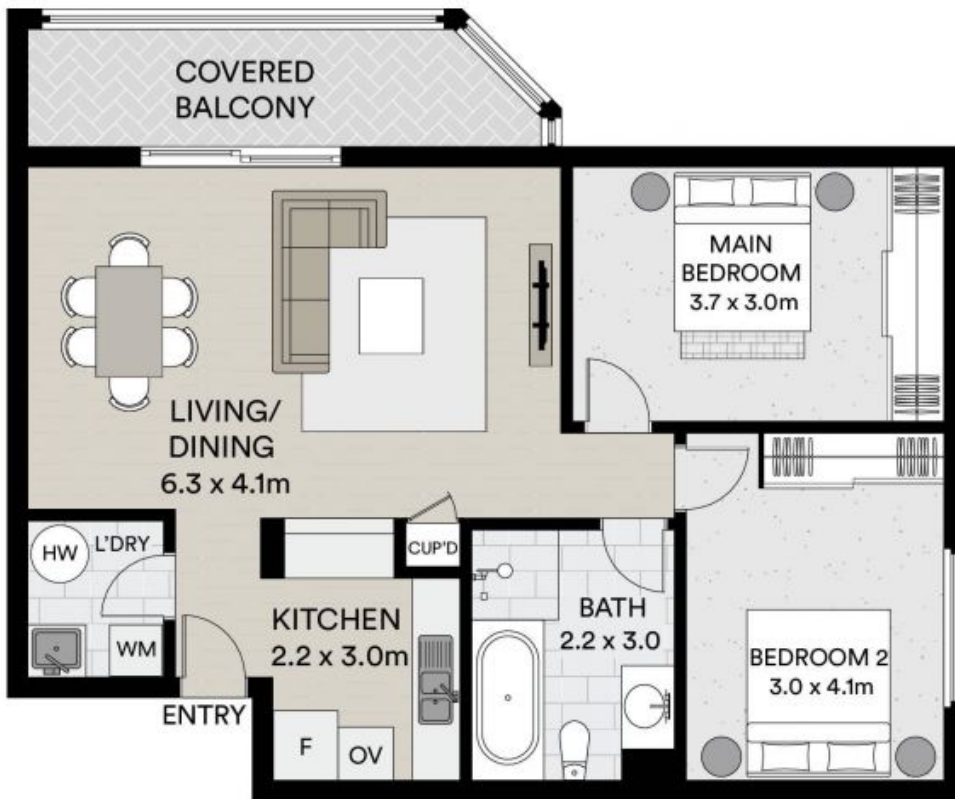
Angela McInerney

0435 348 141



Frank Bartolone

0411 477 758



All information contained in this document is from sources we believe to be accurate, however we cannot guarantee its accuracy. Interested persons should make and rely on their own enquiries in relation to measurements, dimensions, layout, furniture and descriptions.

**INTERNAL AREA:** 76M<sup>2</sup>  
**EXTERNAL AREA:** 8M<sup>2</sup>