



304/32 Shepherd Street Liverpool, NSW



North west facing apartment in secure modern complex

Capturing a radiant northwest aspect, this contemporary apartment delivers a sophisticated convenient lifestyle in 'The Foundry'. It's within The Paper Mill precinct, a walk to parks and Liverpool Station, while close to Westfield Liverpool and eateries.

Price: \$550 pw

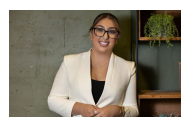
Bond: \$2,200

Available Date: 09/05/2025



Danielle Reynolds

0432 790 090



Eevet Arabo

0402 100 814



All information contained in this document is from sources we believe to be accurate, however we cannot guarantee its accuracy. Interested persons should make and rely on their own enquiries in relation to measurements, dimensions, layout, furniture and descriptions.