

8/85 Castlereagh Street Liverpool, NSW



**Sold by Frank Bartolone**

Situated in a prime location is this tidy spacious two bedroom ground floor unit. Conveniently located near Westfield, Liverpool Hospital, public transport, selection of schools, restaurants and all moments to Liverpool CBD.



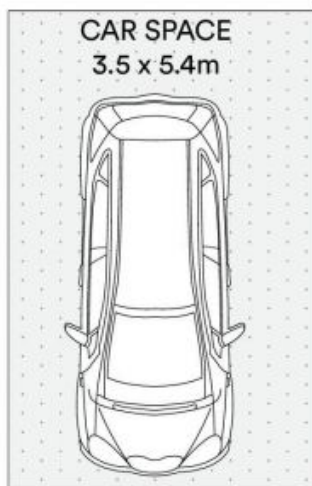
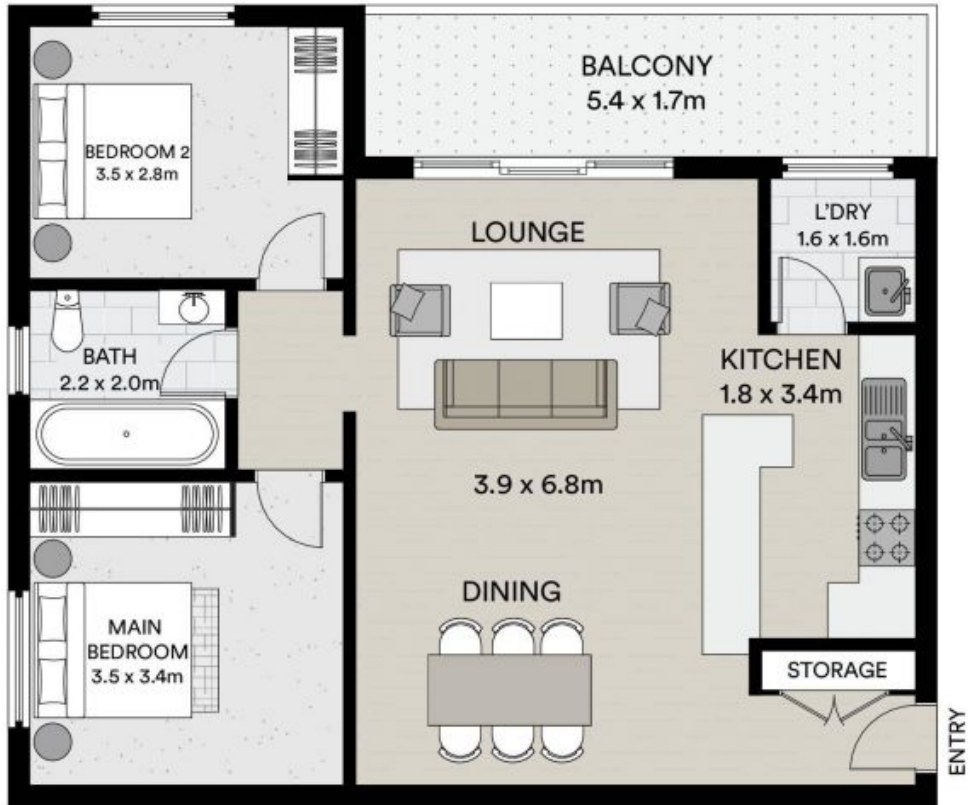
**Angela McInerney**

0435 348 141



**Frank Bartolone**

0411 477 758



(NOT IN POSITION)



All information contained in this document is from sources we believe to be accurate, however we cannot guarantee its accuracy. Interested persons should make and rely on their own enquiries in relation to measurements, dimensions, layout, furniture and descriptions.