



601 The Horsley Drive Smithfield, NSW



Set on a corner block of 796sqm

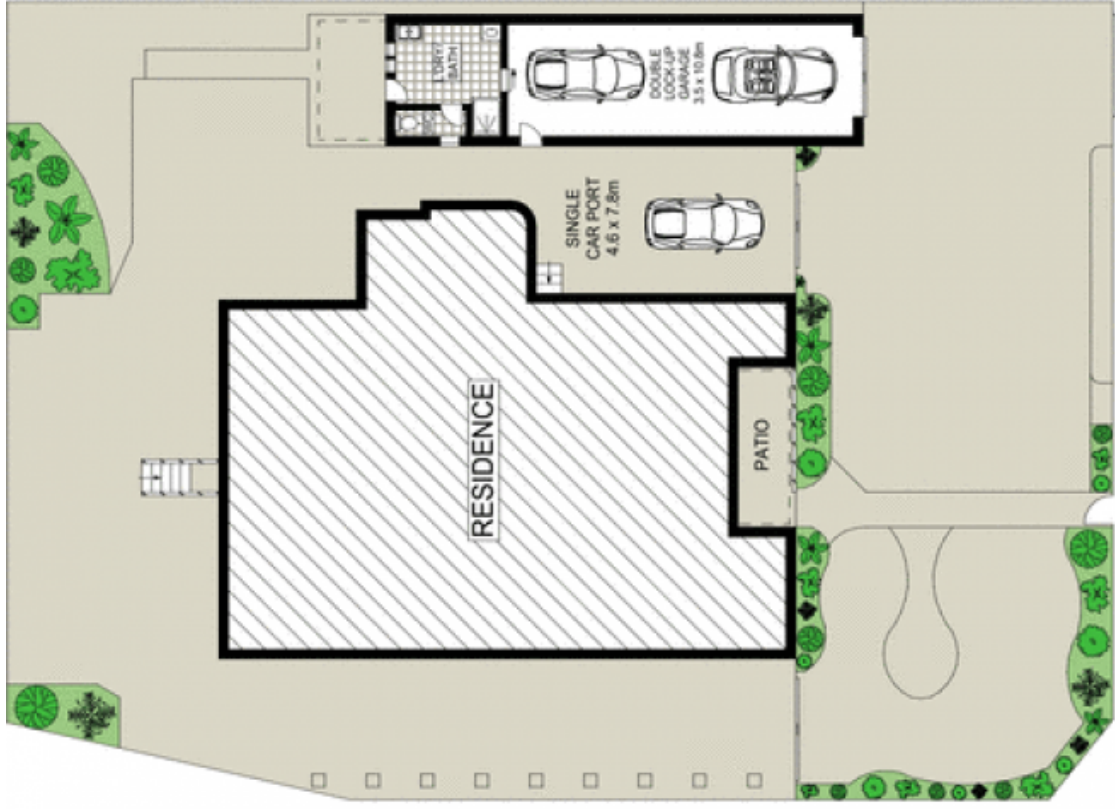
This charming full brick character residence is set on a highly desired corner block of 796sqm and is positioned within easy access to Fairfield CBD, transport and major arterial roads. Offering multiple investment opportunities, it serves as the perfect home for a growing family.

- High ceilings throughout, laminate flooring to bedrooms and lounge
- Gourmet timber kitchen with granite benches, plenty of storage
- Low maintenance concrete paved outdoor area and lock up carport
- Formal lounge and oversized living/rumpus room with fire place
- Very good sized bedrooms, with central bathroom to home
- Double garage with second bathroom combined laundry
- Convenient butler's pantry located adjacent to kitchen
- Possible separate in-law accommodation conversion



Frank Bartolone

0411 477 758



All information contained herein is gathered from sources we believe to be reliable. However we cannot guarantee its accuracy and interested persons should rely on their own enquiries.

601 The Horsley Drive, Smithfield

McGrath