



4 Yamba Place Bossley Park, NSW



Relaxed easycare living in central location

Enjoying an elevated position in a peaceful cul-de-sac setting, this full brick family home presents a versatile floorplan with separate formal and casual living areas. It is superbly located only a short walk to schools, trains and recreation centres.

- It features a stylish formal lounge and separate dining
- Light filled casual living, entertainment and sunroom
- Thoroughly equipped kitchen with ample cupboard space
- Good sized bedrooms all fitted with built-in wardrobes
- The main bedroom also includes a bright and airy ensuite
- Ducted air conditioning, utility room, basement/workshop
- Tiled throughout the living areas, carpeted bedrooms
- Drive through double garage, easycare gardens, level lawns

Price:

Price guide over \$450,000



Frank Bartolone

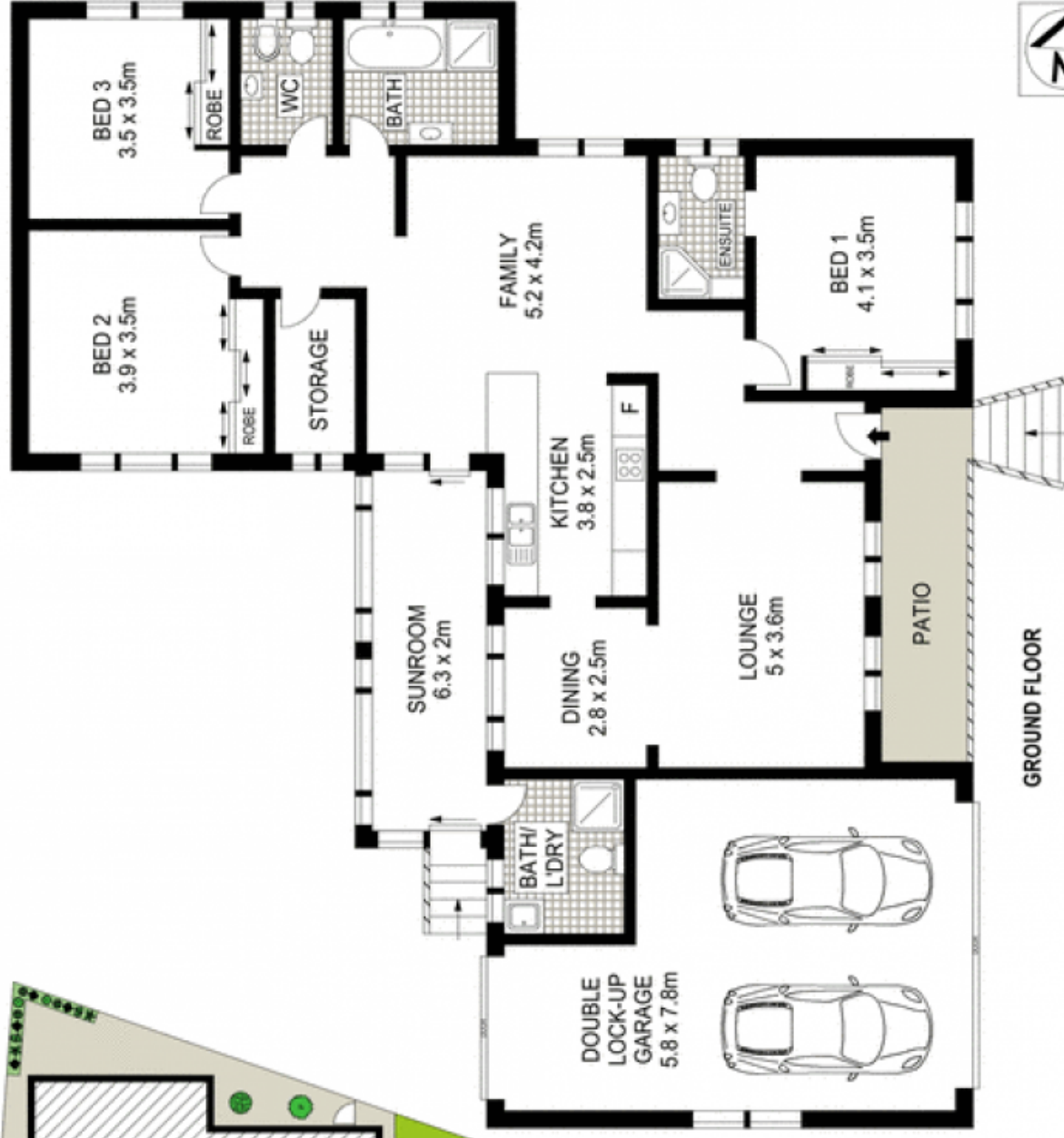
0411 477 758



SITE PLAN (NOT TO SCALE)



Scale in metres. Indicative only. Dimensions are approximate. All information contained herein is gathered from sources we believe to be reliable. However we cannot guarantee its accuracy and interested persons should rely on their own enquiries.



GROUND FLOOR

4 Yamba Place, Bossley Park

McGrath