



9 Guthega Place Bossley Park, NSW



Superb family home or double income investment

A perfect residence for the astute investor or growing family. This private family home offers versatile living for the practicality of every day. It's nestled on a good sized block in a convenient setting, moments from shops, transport and parklands.

Price: Price \$500,000



Frank Bartolone

0411 477 758



SITE PLAN (NOT TO SCALE)



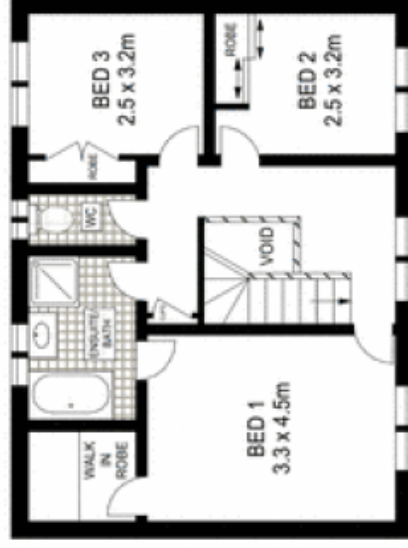
Scale in metres. Indicative only. Dimensions are approximate. All information contained herein is gathered from sources we believe to be reliable. However we cannot guarantee its accuracy and interested persons should rely on their own enquiries.



GROUND FLOOR



GROUND FLOOR



FIRST FLOOR

9 Guthega Place, Bossley Park

McGrath