

4/21 Lachlan Street Warwick Farm, NSW



Sold By McGrath Estate Agents Liverpool

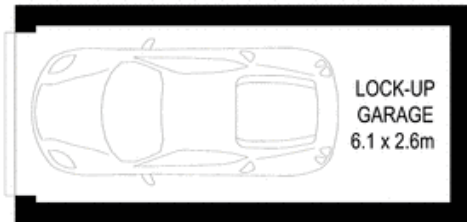
Price: \$367,000

Occupying a prime mid level position with only one common wall, this light filled apartment presents a convenient and low maintenance option for a first home-buyer or investor. It's within walking distance of Warwick Farm Station and Liverpool Westfield Shopping Centre

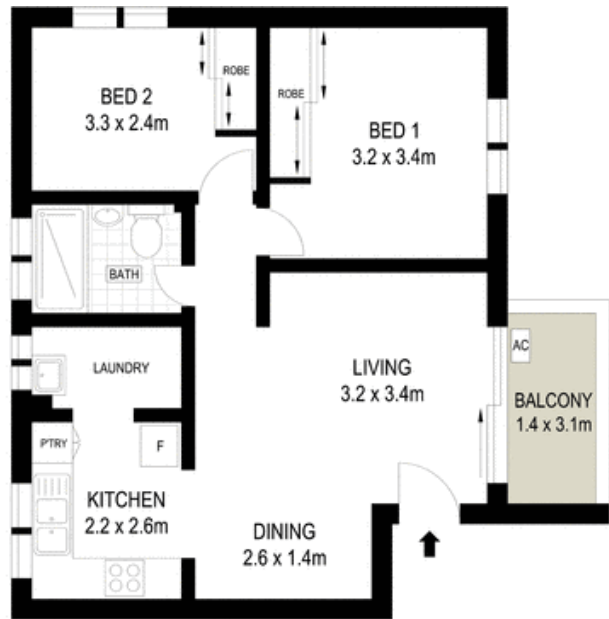
- Light filled interiors with open plan living and dining areas
- Outdoor flow to an elevated balcony for alfresco living
- Electric kitchen appointed with a stainless steel oven
- Two bedrooms, master with built-in wardrobe, bathroom
- Air conditioning, internal laundry, tiled/carpeted floors
- Single lock-up garage on title, secure intercom entry
- Potential to add personal touches and enhance interiors
- Opportunity to renovate an update existing kitchen/bathroom

Stone Real Estate

02 9824 1100
Liverpool



GROUND FLOOR



TOP FLOOR

0 1 2 3 4 5

Scale in metres. Indicative only. Dimensions are approximate. All information contained herein is gathered from sources we believe to be reliable. However we cannot guarantee its accuracy and interested persons should rely on their own enquiries.



4/21 Lachan Street, Warwick Farm

McGrath