



15 Gowanlea Avenue Elizabeth Hills, NSW

5

3

2

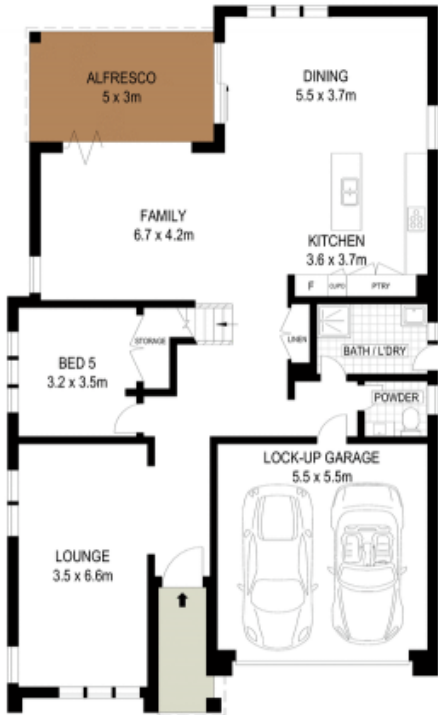
Sold By McGrath Estate Agents Liverpool

Newly completed for contemporary living, this freestanding family home presents a streamlined open plan design with a north facing outdoor entertaining haven. It occupies a prominent corner position, within moments of shops, schools and bus transport.

- Spacious open plan design with modern living and dining areas
- Sophisticated formal lounge room or generous media retreat
- Bi-folds open to an all-weather outdoor entertaining deck
- Flawless CaesarStone island kitchen, gourmet gas appliances
- King sized master bedroom has walk through robe and ensuite
- Immaculate floor-to-ceiling tiled bathrooms, w/c and alarm
- Ducted air conditioning and vacuum throughout, security cameras
- Readymade option for young families seeking a premium address

Stone Real Estate

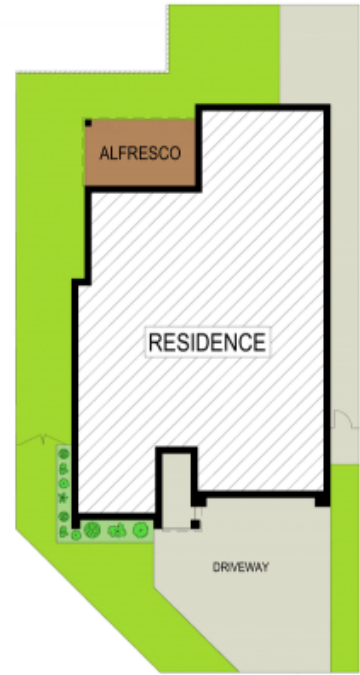
02 9824 1100
Liverpool



ENTRY LEVEL



UPPER LEVEL



McGrath

Scale in metres. Indicative only. Dimensions are approximate. All information contained herein is gathered from sources we believe to be reliable. However we cannot guarantee its accuracy and interested persons should rely on their own enquiries