



10 Culverston Avenue Denham Court, NSW

6

3

4

Sold by Glen Craigie

Resting on an impressive 10,000sqm landholding, this sprawling family home offers an abundance of space, privacy and contemporary features for a privileged lifestyle. It's located close to Edmondson Park Train Station and M5/M5 motorways for city access.

- Single level layout showcases premium renovations throughout
- Multiple spacious living zones accommodate growing families
- In-ground swimming pool plus well equipped poolside games room
- Gourmet kitchen features premium gas appliances and meals bar
- Generously scaled bedrooms appointed with built-in wardrobes
- Luxury master suite with walk-in robe and dual shower ensuite
- Sleek bathroom showcases freestanding bath, quality fittings
- Ducted air conditioning, 10 foot ceilings, fully fenced land



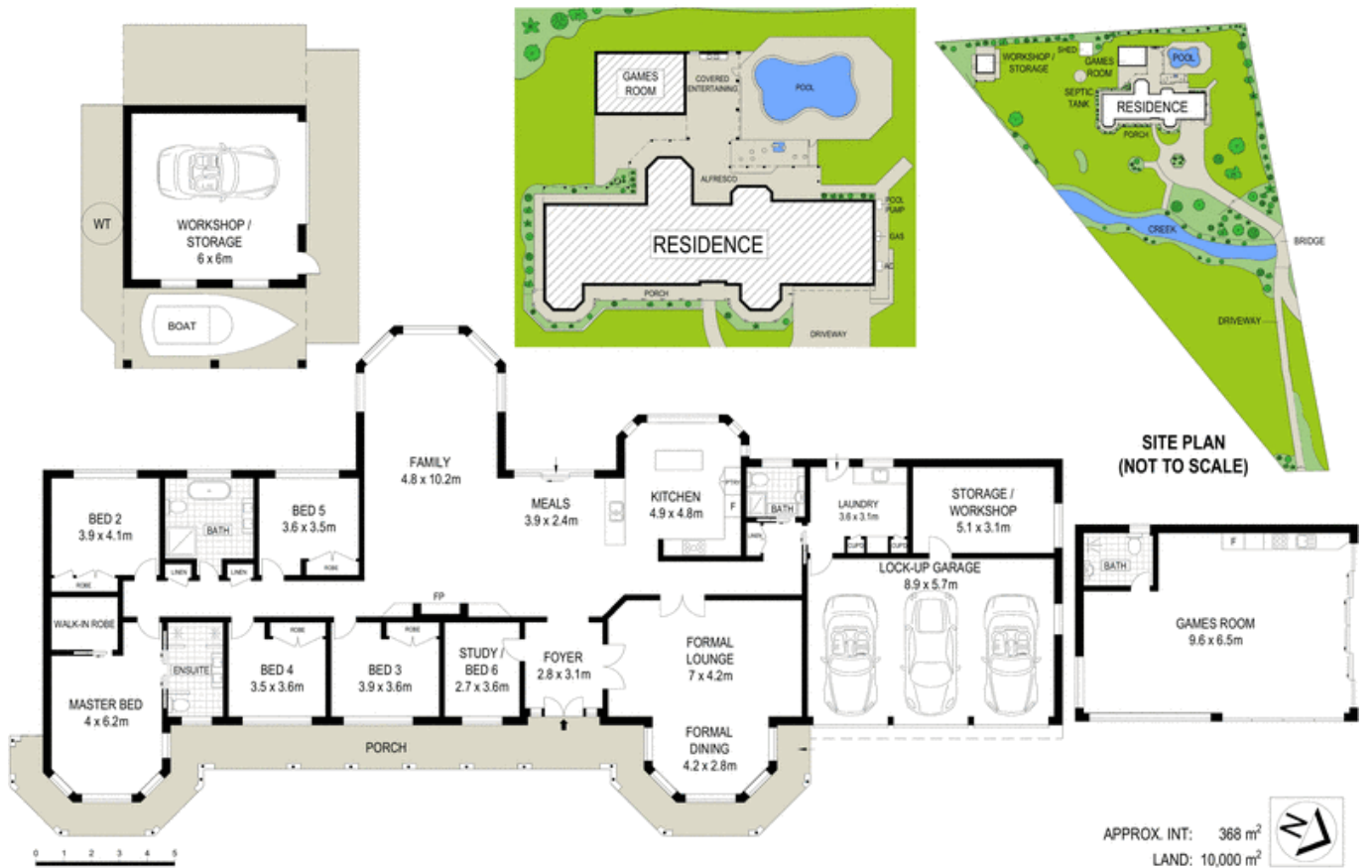
Glen Craigie

0401 529 930



Glen Craigie

0401 529 930



Scale in metres. Indicative only. Dimensions are approximate. All information contained herein is gathered from sources we believe to be reliable. However we cannot guarantee its accuracy and interested persons should rely on their own enquiries.

10 Culverston Avenue, Denham Court

McGrath