

23 Garrison Road Bossley Park, NSW

3 2 1

### Stylishly renovated duplex in great family location

Offering an easy to maintain lifestyle in a quiet yet highly convenient location, this quality family duplex is stylishly updated, immaculately maintained and ready to move straight into and enjoy. Schools and Stockland Wetherill Park are only moments away.

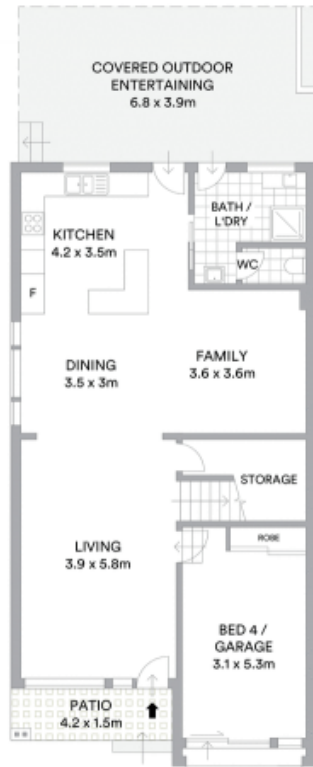
- Great rear northerly aspect ensures plentiful natural light
- Flexible modern design offering multiple living/dining areas
- Covered outdoor entertaining plus low maintenance garden
- Gourmet island kitchen includes quality stainless gas cooktop
- Three generous bedrooms fitted with walk-in/built-in robes
- Two stylish bathrooms, garage can revert to fourth bedroom
- High ceilings, split system/ducted air conditioning, storage
- Benefit from gas heating and Continuous Flow Hot Water System

Price:

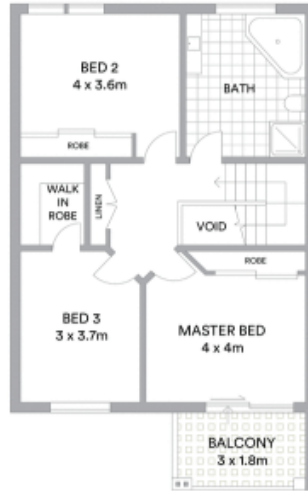
Price guide \$740,000 - \$760,000

**Stone Real Estate**

02 9824 1100  
**Liverpool**



GROUND LEVEL



UPPER LEVEL



**McGrath**

Scale in metres. Indicative only. All information contained herein is obtained from sources we believe to be accurate. We cannot guarantee its accuracy. Interested persons should make and rely on their own enquiries