



21 Burdekin Court Wattle Grove, NSW



Light filled family home of space and comfort

Exceptionally located in a highly sought-after address, this instantly appealing residence provides an idyllic family home of space, comfort and ease of living. It is positioned a short walk to Wattle Grove Shopping Village, cafes and public transport.

- Wonderfully spacious layout features formal/informal living
- Interiors open to superb undercover alfresco entertaining
- Sun bathed child-friendly level backyard, easycare gardens
- Neat and tidy kitchen, gas cooking, ample cupboard storage
- Light filled family meals/casual living opens to backyard
- Well proportioned bedrooms appointed with built-in wardrobes
- Master with walk-in wardrobe and ensuite, air conditioning
- Solid timber floors, glazed terracotta roof and solar panels

Price:

Price guide \$945,000 - \$965,000



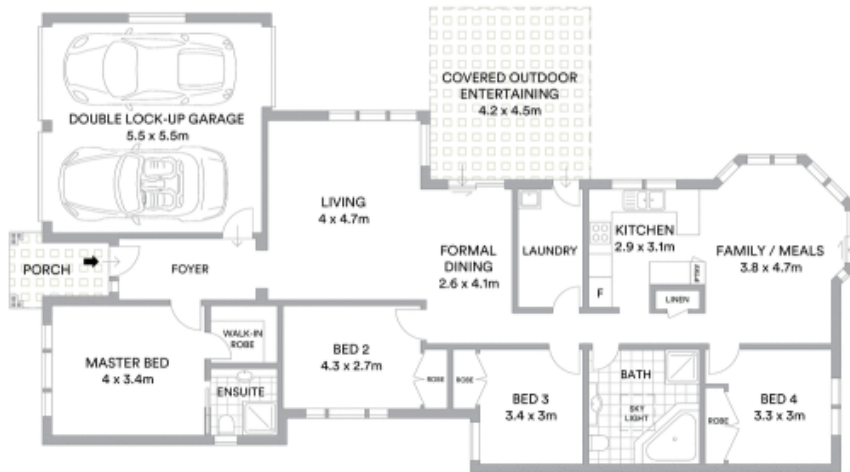
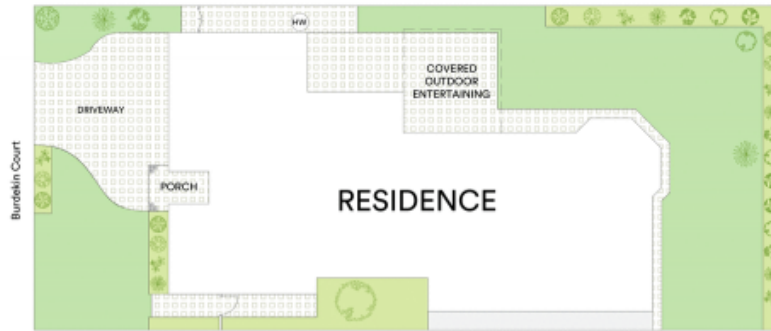
Glen Craigie

0401 529 930



Glen Craigie

0401 529 930



McGrath

Scale in metres. Indicative only. All information contained herein is obtained from sources we believe to be accurate. We cannot guarantee its accuracy. Interested persons should make and rely on their own enquiries