



20 Thorpe Place Abbotsbury, NSW

5

3

2

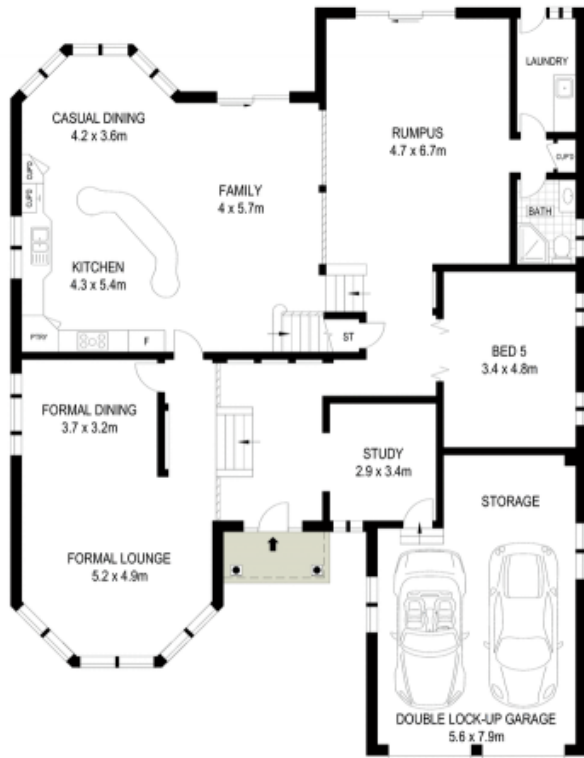
Sold By McGrath Estate Agents Liverpool

Custom built for spacious family living, this cherished residence impresses with versatile interiors of superb comfort revealing multiple living zones. It is set on the high end of the cul-de-sac in a prestige locale, with easy access to schools and parks.

- Expansive dual level layout with light and spacious interiors
- Elevated position captures leafy neighbourhood outlooks
- Desirable entertainer with choice of formal/casual settings
- Family room spills out to wonderful covered alfresco retreat
- Gourmet kitchen has stone benchtops and stainless gas stove
- Generous accommodation offers five bedrooms plus a study
- Grand master retreat provides walk-in robe and bath ensuite
- Spa bathroom, floors of stylish tile and polished timber

Stone Real Estate

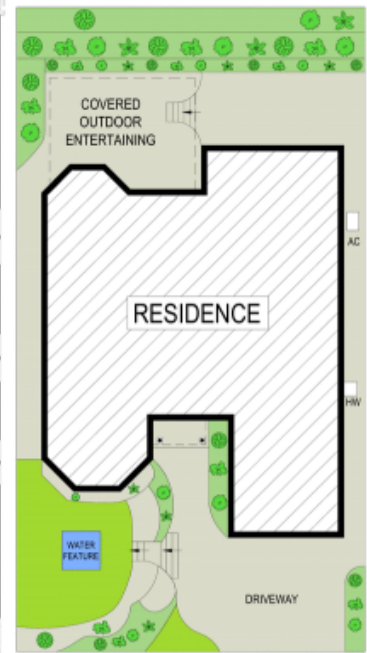
02 9824 1100
Liverpool



GROUND FLOOR



FIRST FLOOR



McGrath

Scale in metres. Indicative only. Dimensions are approximate. All information contained herein is gathered from sources we believe to be reliable. However we cannot guarantee its accuracy and interested persons should rely on their own enquiries