



5 Glatton Road Glenfield, NSW



Sold by Glen Craigie, McGrath Estate Agents

Flexibly laid out and presented as-new, this single level home presents a unique opportunity for modern family living within the sought-after Panorama Estate community. Glenfield Station, shops, parks and a range of quality schools are all close at hand.

- Versatile floorplan provides choice of separate living spaces
- Open plan central family area with easy indoor/outdoor flow
- All-weather entertaining terrace enjoys sunny north aspect
- Gas kitchen features stainless appliances, stone benchtops
- Four of five generous bedrooms have built-in/walk-in robes
- Stylishly finished full bathroom plus two spacious ensuites
- Metres from communal pool, tennis court and community club
- Ducted air conditioning and vacuum, ample integrated storage



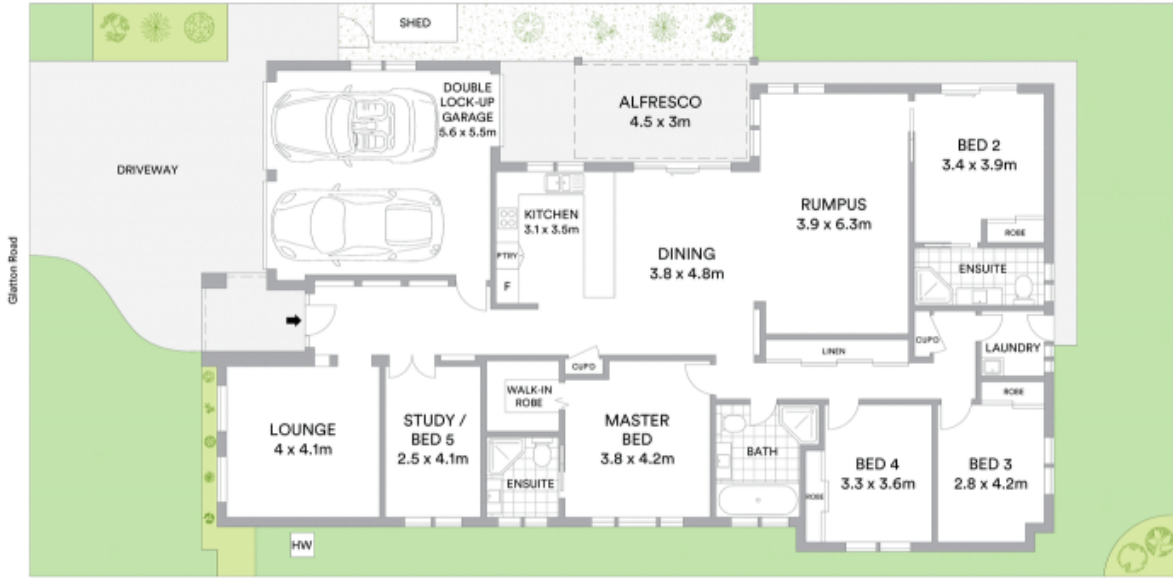
Glen Craigie

0401 529 930



Glen Craigie

0401 529 930



Internal 219sqm
Land area 450sqm



McGrath

Scale in metres. Indicative only. All information contained herein is obtained from sources we believe to be accurate. We cannot guarantee its accuracy. Interested persons should make and rely on their own enquiries