



6 Konara Street Leppington, NSW

5 2 2

### Easy designer living in cutting edge family home

Privately positioned in the sought-after 'Willowdale Estate', this architect designed home combines sleek contemporary interiors with premium quality finishes throughout. It's tucked away in a quiet street in a thriving community, near shops and transport.

- Crisp modern interiors with open plan living/dining spaces
- Flow to landscaped gardens and covered alfresco entertaining
- Gourmet stone island kitchen includes quality gas cooktop
- Four bedrooms plus deluxe master with walk-in robe and ensuite
- Designer bathrooms, main with freestanding tub, powder room
- Versatile separate studio ideal for entertaining/home business
- Air conditioning, timber flooring and high ceilings throughout
- High quality family home, north facing and solar passive

Price: \$780,000 - \$830,000



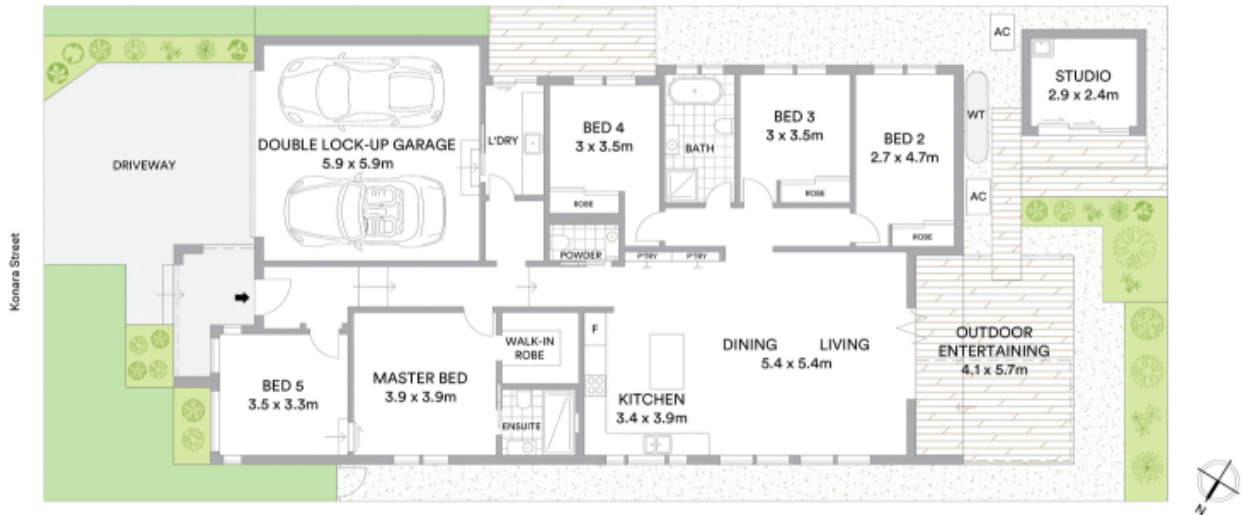
**Glen Craigie**

0401 529 930



**Glen Craigie**

0401 529 930



Internal 205sqm  
 Studio 7sqm  
 External 153sqm  
 Land area 375sqm

**McGrath**

Scale in metres. Indicative only. All information contained herein is obtained from sources we believe to be accurate. We cannot guarantee its accuracy. Interested persons should make and rely on their own enquiries