



137 Bardia Parade Holsworthy, NSW

4 2 3

Sold By McGrath Estate Agents Liverpool

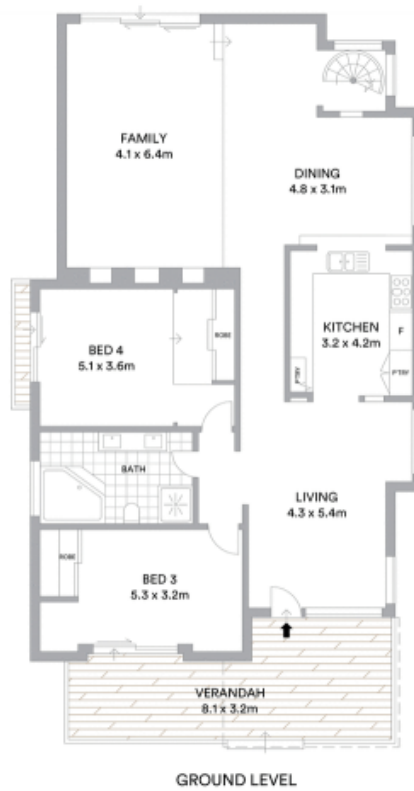
Price: \$770,000 - \$830,000

Offering a competitive entry point into the market, this tightly-held home is creatively renovated and provides two spacious levels complete with custom features. It's on a secure 575sqm block, a stroll to Holsworthy Station, schools and Wattle Grove Plaza.

- Unique haven owned for 22 years, ideal for first homebuyers
- Separate lounge room, airy dining area boasts hardwood floors
- Striking living space with dramatic ceiling, tasteful decor
- Complemented by private gardens and a deck for entertaining
- Modern gas kitchen has stainless steel appliances, Smeg oven
- Generous bedrooms, sleek spa bathroom, study/parents' retreat
- Attractive master adjoins a walk-in robe and stylish ensuite
- Air conditioning, CCTV security, gas outlets, handy workshop

Stone Real Estate

02 9824 1100
Liverpool



McGrath

Scale in metres. Indicative only. All information contained herein is obtained from sources we believe to be accurate. We cannot guarantee its accuracy. Interested persons should make and rely on their own enquiries