

11 Robey Avenue Middleton Grange, NSW



Contemporary family living with luxury finishes

Set within the prestigious Parkbridge estate with access to exclusive community facilities, this ultra-modern home has been designed with an eye for detail and an emphasis on a relaxed, easy care family lifestyle. It's moments to the M7, shops and schools.

- Exclusive access to community pool, tennis courts, parkland
- Abundant formal and inform living spaces, including media room
- North facing alfresco entertaining with cathedral ceiling
- Gourmet gas and stone kitchen with stainless steel appliances
- Four upper level double bedrooms with built-in wardrobes
- Impressive master with generous walk-in robe and ensuite
- Luxe bathrooms, main with freestanding bath, glass shower
- Ducted air conditioning and vacuum cleaner

Price:

Price \$880,000



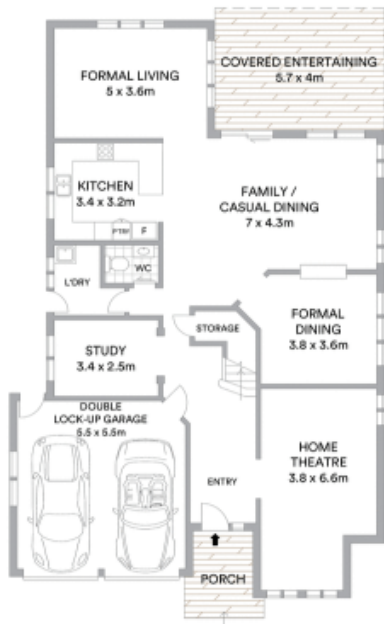
Glen Craigie

0401 529 930

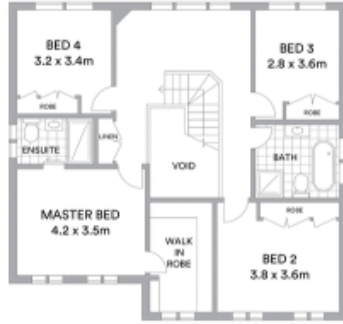


Glen Craigie

0401 529 930



GROUND FLOOR



FIRST FLOOR



McGrath

Scale in metres. Indicative only. All information contained herein is obtained from sources we believe to be accurate. We cannot guarantee its accuracy. Interested persons should make and rely on their own enquiries