



3 Hamlin Circuit Holsworthy, NSW



Sold By McGrath Estate Agents Liverpool

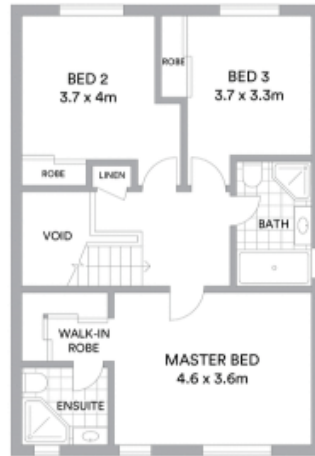
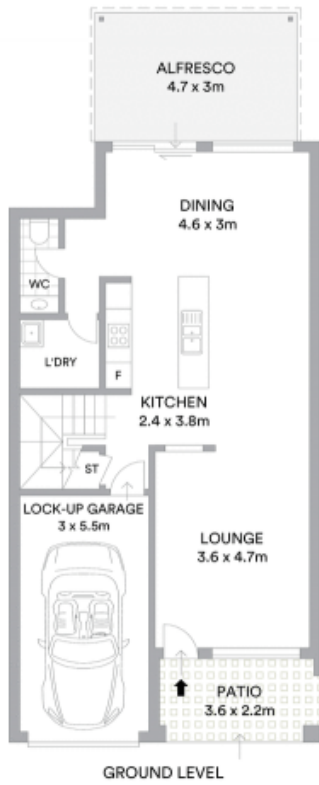
Price: \$759,000

Nestled in the close knit community of Mornington Estate, this well maintained duplex offers comfort and convenience for a young family. It's perfectly placed just footsteps to Holsworthy Station, near local shops and enjoys easy access to the M5 motorway.

- Updated duplex in quiet street, shares only one common wall
- Integrated living and dining space with ideal outdoor flow
- Covered entertaining terrace overlooks landscaped garden
- Stone bench kitchen, stainless Fisher and Paykel gas appliances
- Three bedrooms with built-ins, walk-in and ensuite to master
- Pristine bathroom has shower and tub, separate guest w/c
- Air conditioning, timber floors and a generous front patio
- Residents have use of resort pool, tennis court and barbecues

Stone Real Estate

02 9824 1100
Liverpool



McGrath

Scale in metres. Indicative only. All information contained herein is obtained from sources we believe to be accurate. We cannot guarantee its accuracy. Interested persons should make and rely on their own enquiries