

20 Gilgandra Road Hoxton Park, NSW

4

2

2

Sold by Glen Craigie, McGrath Estate Agents

An appealing lifestyle retreat, this well maintained family home is thoughtfully designed to provide privacy and comfort over two airy levels. It is set on an easycare 368sqm block in a quiet pocket, a short stroll to parks and Hoxton Park Public School.

- Spacious separate lounge and dining room, refreshed decor
- Open plan family room bathed in light features tiled floors
- Massive entertaining patio to enjoy year-round barbecues
- North east facing garden with a level lawn for kids to play
- Well equipped kitchen includes a pantry and a gas cooktop
- Generous bedrooms all have built-ins, main boasts an ensuite
- Fully appointed bathroom, laundry incorporates a third w/c
- Air conditioning, security system, intercom, storage shed

Price: \$789,000



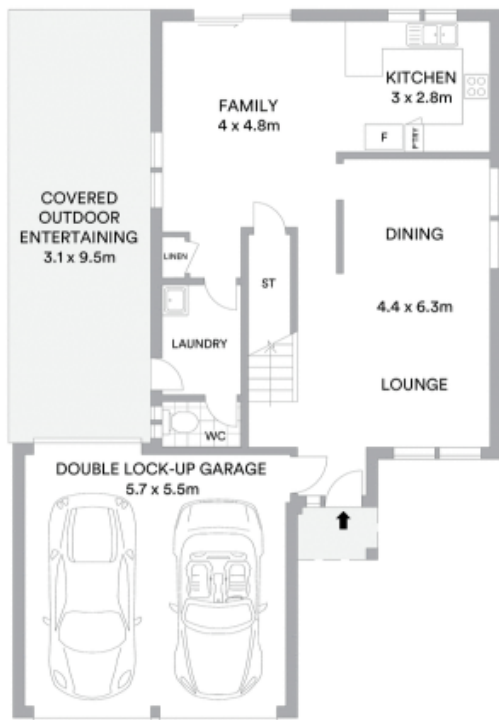
Glen Craigie

0401 529 930

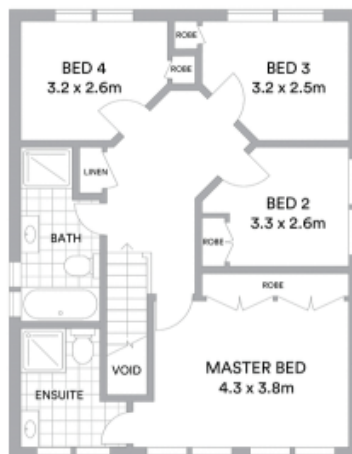


Glen Craigie

0401 529 930



GROUND FLOOR



FIRST FLOOR



McGrath