

12 Mayne Street Wilberforce, NSW 3 1 1

### Sold By McGrath Estate Agents Liverpool

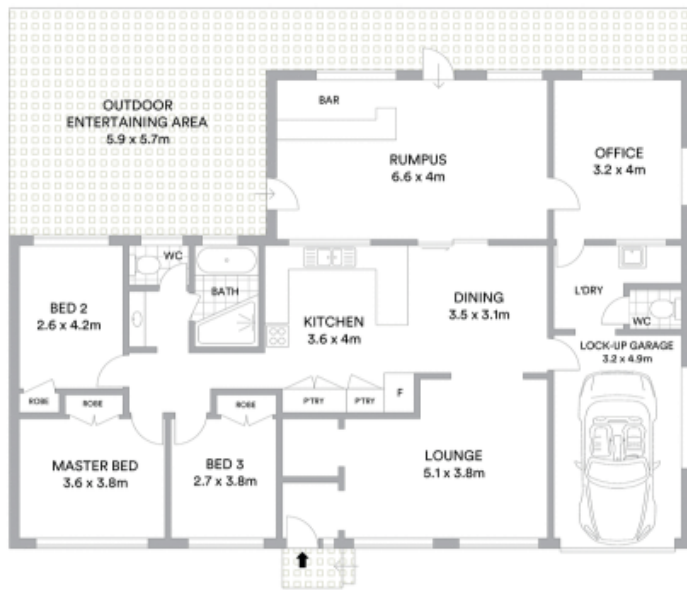
Price: \$649,000 - \$699,000

Walking distance to shops and schools, this original home with scope to renovate provides a wonderful opportunity for homebuyers/ investor to gain from improvements. The huge 1,011sqm block is situated in one of the most sought-after streets in Wilberforce.

- Level allotment offers scope in a quiet cul-de-sac location
- 1,011sqm block giving you loads of yard space
- Walking distance to local shops, schools and transport
- Air conditioning, internal laundry and second toilet
- Generous 3-way bathroom with separate bath
- 3 bedrooms all the built-ins and a separate study
- Original kitchen has ample cabinetry and bench space
- Large concrete outdoor entertaining area and BBQ

### Stone Real Estate

02 9824 1100  
Liverpool



**McGrath**

Scale in metres. Indicative only. All information contained herein is obtained from sources we believe to be accurate. We cannot guarantee its accuracy. Interested persons should make and rely on their own enquiries