

1/22 Margate Avenue Holsworthy, NSW

3 

2 

1 

### Sold By McGrath Estate Agents Liverpool

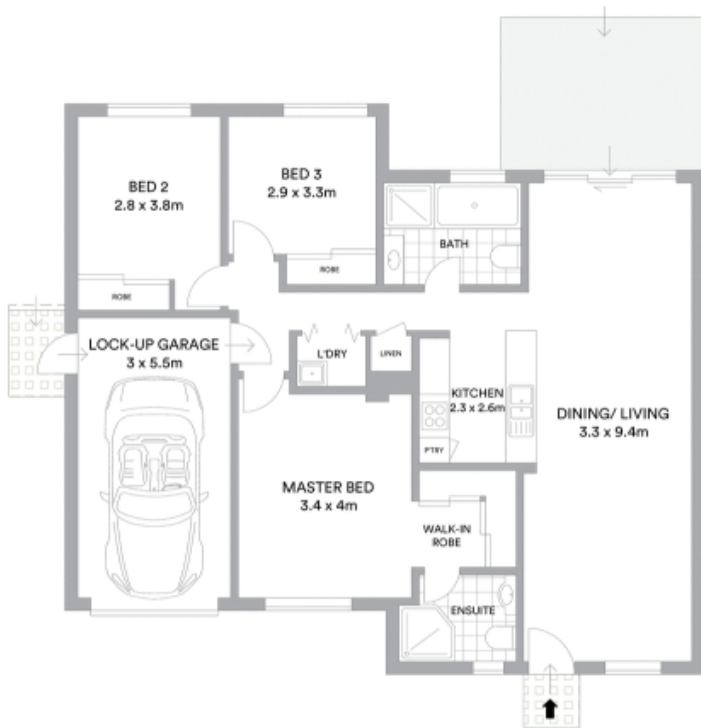
Price: \$650,000

Surrounded by modern homes in a close-knit community, this property presents a rare opportunity to secure one of Mornington Estate's ground floor villa style dwellings. It's conveniently located a 5 minute walk to Holsworthy Station for trains to the city.

- Wonderfully spacious interiors with neutral tones throughout
- Open plan living and dining zone enjoys superb outdoor flow
- Exclusive low maintenance large backyard, child and pet-friendly
- Ample capacity for a barbecue in a relaxed garden setting
- Modern stone kitchen includes Fisher and Paykel gas appliances
- Three generous bedrooms with built-ins plus a master suite
- Ducted air conditioning, timber floors and internal laundry
- Fantastic investment potential, layout would suit downsizers

**Stone Real Estate**

02 9824 1100  
**Liverpool**



**McGrath**

Scale in metres. Indicative only. All information contained herein is obtained from sources we believe to be accurate. We cannot guarantee its accuracy. Interested persons should make and rely on their own enquiries