

25/10 Castlereagh Street Liverpool, NSW



**Sold By McGrath Estate Agents Liverpool**

**Price:** \$490,000 - \$535,000

Offering a great opportunity for an investor or first homebuyer, this dual level apartment presents light filled interiors and elevated district views. It's located just steps to Liverpool Westfield and station, local parklands and the new university.

- Situated on the fourth floor of a modern and secure complex
- Spacious living/dining with floorboards and elevated outlooks
- Clean and fresh interiors flow to large entertaining terrace
- Gourmet CaesarStone kitchen with stainless gas appliances
- Two sizeable bedrooms with built-in robes, plus study nook
- Master bedroom is complete with walk-in wardrobe and ensuite
- Modern bathroom on upper level with separate bath and shower
- Powder room, internal laundry, air conditioning, storage

**Stone Real Estate**

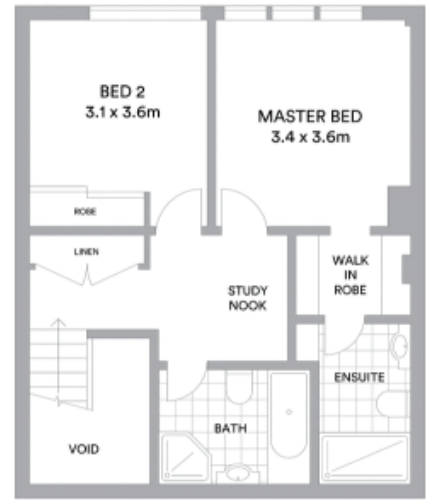
02 9824 1100  
**Liverpool**



BASEMENT



↑  
LEVEL FOUR



UPPER LEVEL



Internal 108sqm  
External 14sqm

**McGrath**

Scale in metres. Indicative only. All information contained herein is obtained from sources we believe to be accurate. We cannot guarantee its accuracy. Interested persons should make and rely on their own enquiries