



20 Scottsdale Circuit West Hoxton, NSW

4 2 2

Designer family residence is a luxurious retreat

Embracing contemporary notions of open plan living, this luxurious residence captures sweeping city and district panoramas from an elevated vantage point. It's designed for a lifestyle of entertaining and family enjoyment, with a coveted parkside setting.

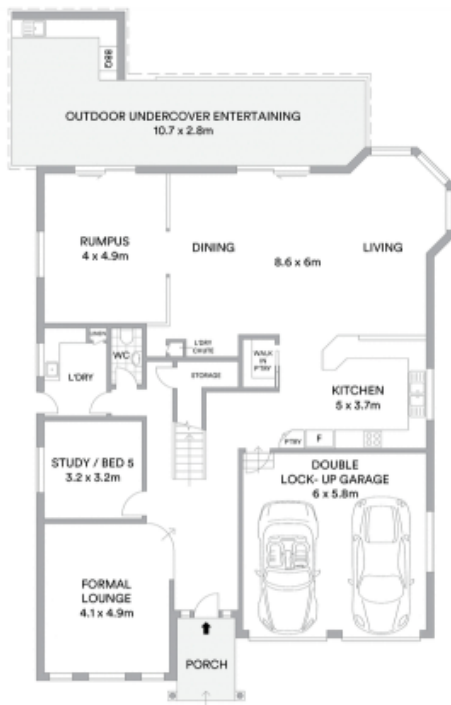
- Selection of living/family areas across two generous levels
- Expansive terrace leads to large in-ground solar heated pool
- Open kitchen boasts walk-in butlers' pantry, sleek appliances
- Four double sized bedrooms, all offering built-in wardrobes
- Sprawling master wing with ensuite, walk-in robe and balcony
- Main bathroom reveals separate bathtub, shower and dual sinks
- Powder room, separate study/fifth bedroom, barbecue area
- Inspired design showcases Travertine and timber detailing

Price:

Price \$850,000

Stone Real Estate

02 9824 1100
Liverpool



ENTRY LEVEL



FIRST LEVEL



Scottsdale Circuit



McGrath

Scale in metres. Indicative only. All information contained herein is obtained from sources we believe to be accurate. We cannot guarantee its accuracy. Interested persons should make and rely on their own enquiries