



23 Jenolan Court Wattle Grove, NSW

3 2 2

**Sold By McGrath Estate Agents Liverpool**

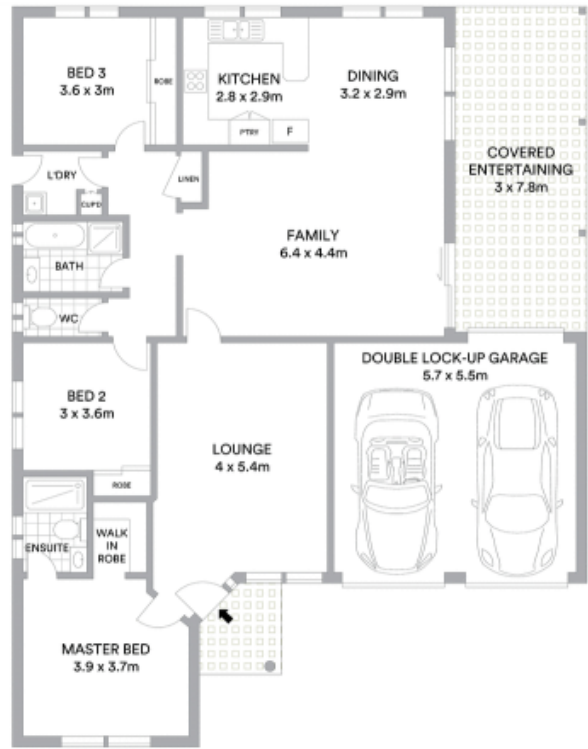
Peaceful and ready to move straight into and enjoy, this modern home will appeal to buyers seeking space, comfort and convenience. It's tucked away in a private cul-de-sac on a sun filled north facing block, close to village shops and local schools.

- Versatile layout with open plan living/dining plus a lounge
- Covered outdoor entertaining plus well kept level gardens
- Well appointed kitchen equipped with stainless gas cooktop
- Accommodation consists of three generously sized bedrooms
- Private master complemented with walk-in robe and ensuite
- Full main bathroom, gas points, shutters on the windows
- Ducted air conditioning throughout, alarm, plentiful storage
- Opportunity to build a granny flat in the backyard (STCA)

**Price:** \$720,000 - \$790,000

**Stone Real Estate**

02 9824 1100  
**Liverpool**



**McGrath**

Scale in metres. Indicative only. North arrow and all information contained herein is obtained from sources we believe to be accurate. We cannot guarantee its accuracy. Interested persons should make and rely on their own enquiries.