



7 Mariner Crescent Abbotsbury, NSW

5

3

2

Sold By McGrath Estate Agents Liverpool

Capturing views across Stockdale Reserve, this spacious family home offers a versatile layout with multiple living zones and scope for dual living. It's set in a convenient location close to schools, parks, shops and buses with easy access to the M7.

- Spacious main living area boasts a cosy fireplace and skylight
- Formal and casual dining rooms lead to upstairs balcony area
- Covered alfresco with salt water swimming pool, outdoor blinds
- Modern kitchen with De'Longhi appliances and ample storage
- Three upstairs rooms with built-ins, master has ensuite and retreat
- Well equipped bathrooms, main enjoys a separate bath/shower
- Ground level with two bedrooms, kitchen and private entry
- Air conditioning, high ceilings, alarm, study, downlights

Price:

Price \$920,000



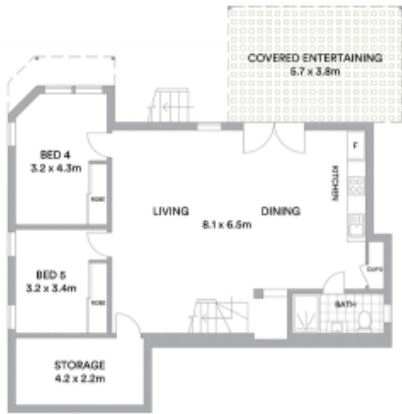
Frank Bartolone

0411 477 758

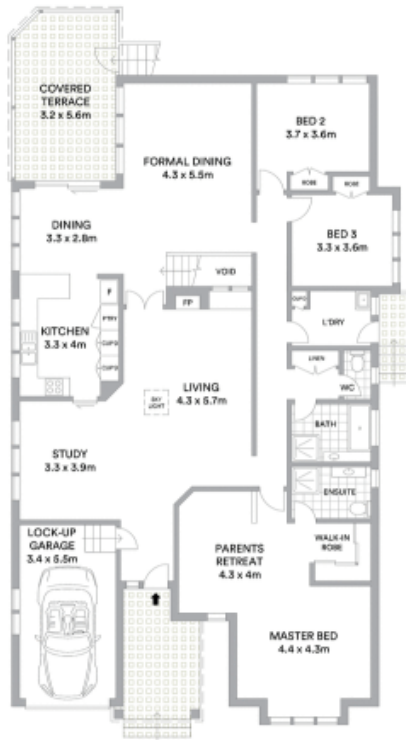


Angela McInerney

0435 348 141



LOWER LEVEL



ENTRY LEVEL



McGrath

Scale in metres. Indicative only. All information contained herein is obtained from sources we believe to be accurate. We cannot guarantee its accuracy. Interested persons should make and rely on their own enquiries