

11/12 George Street Liverpool, NSW 2 2 1

Sold by Glen Craigie, McGrath Estate Agents

Ideally positioned with a northern aspect, this well presented apartment provides a light filled low maintenance lifestyle. It's conveniently located within walking distance of Liverpool Station and Westfield, while handy to parks, schools and transport.

- Light filled open living and dining areas with easycare floors
- Easy outdoor flow to a sun-drenched entertaining balcony
- Modern kitchen appointed with a stainless steel gas stove
- Two double-sized bedrooms with built-ins, one flows to balcony
- Two bathrooms, generous main plus ensuite to the master
- Internal laundry, air conditioning, gas bayonet for heating
- Spanning a total of 119sqm within a secure entry building
- Covered access to a single car space in basement car park

Price: \$460,000 - \$490,000



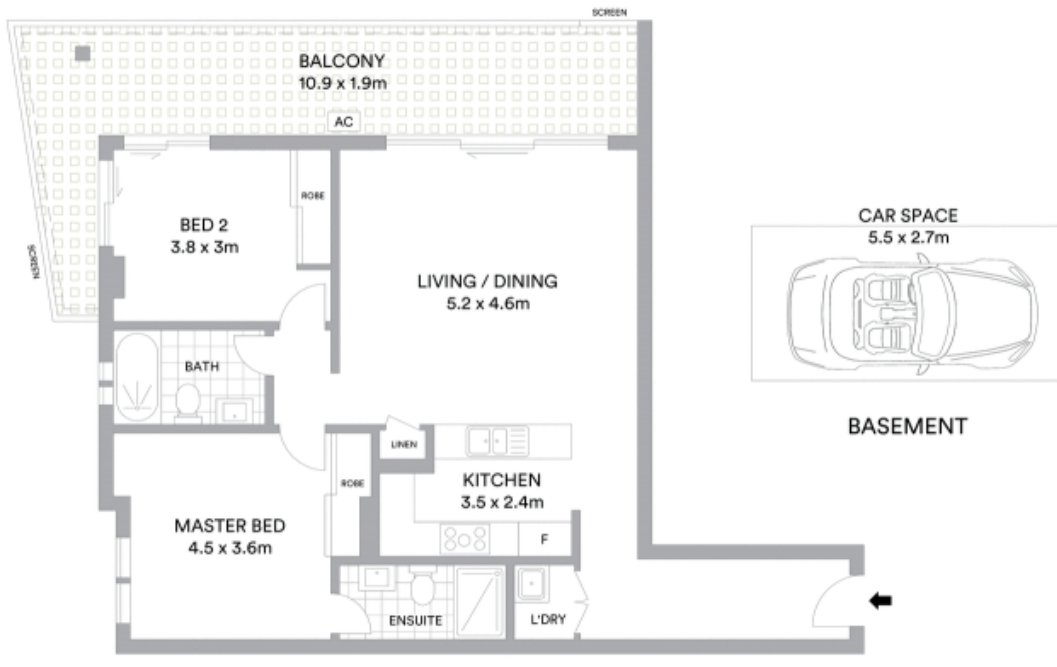
Glen Craigie

0401 529 930



Glen Craigie

0401 529 930



LEVEL TWO

Total area 119sqm

McGrath

Scale in metres. Indicative only. All information contained herein is obtained from sources we believe to be accurate. We cannot guarantee its accuracy. Interested persons should make and rely on their own enquiries.