



27 Caledonia Crescent Gledswood Hills, NSW



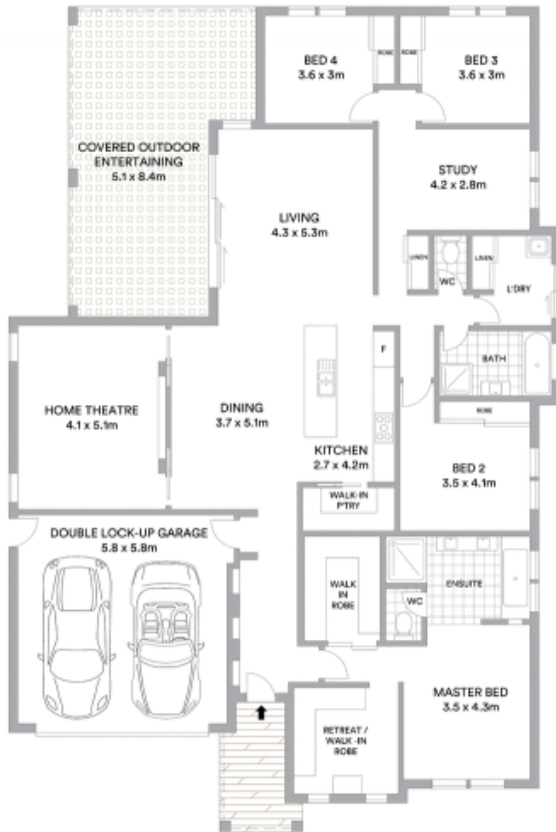
Sold By McGrath Estate Agents Liverpool

Creating an immediate impact with its light filled interiors, quality inclusions and prime rear north aspect, this superb Coral Homes residence offers readymade contemporary comfort. Its prestigious 'Hermitage Estate' address is central to daily amenities.

- Flowing design combines the living/dining area, home cinema
- Interiors open to fully equipped covered entertaining area
- Sun drenched level backyard with in-ground swimming pool
- Modern gas equipped kitchen complete with walk-in pantry
- All bedrooms have built-ins, separate study
- Luxury master retreat has stylish ensuite and walk-in robe
- Smartly appointed main bathroom features quality fittings
- Ducted air conditioning, plantation shutters, solar panels

Stone Real Estate

02 9824 1100
Liverpool



Land area 602sqm

McGrath

Scale in metres. Indicative only. All information contained herein is obtained from sources we believe to be accurate. We cannot guarantee its accuracy. Interested persons should make and rely on their own enquiries