

26/42 Hoxton Park Road Liverpool, NSW



**Sold by Glen Craigie, McGrath Estate Agents**

**Price:** \$450,000

Enjoying parkland views, this contemporary apartment is under two years old and sleekly presented providing an idyllic balance of desirable indoor/outdoor living spaces. The convenient locale is within an easy commute of Liverpool Station and Westfield Liverpool.

- Well positioned on third floor of modern low rise complex
- Airy open plan lounge/dining area features air conditioning
- Up-to-the-minute decor, beautiful large format floor tiles
- Vast north/east facing wraparound terrace for entertaining
- Central kitchen equipped with gas cooktop, stone island bench
- Spacious bedrooms both appointed with built-in wardrobes
- Master includes ensuite with dual basins, access to balcony
- Attractive bathroom, separate internal laundry facilities



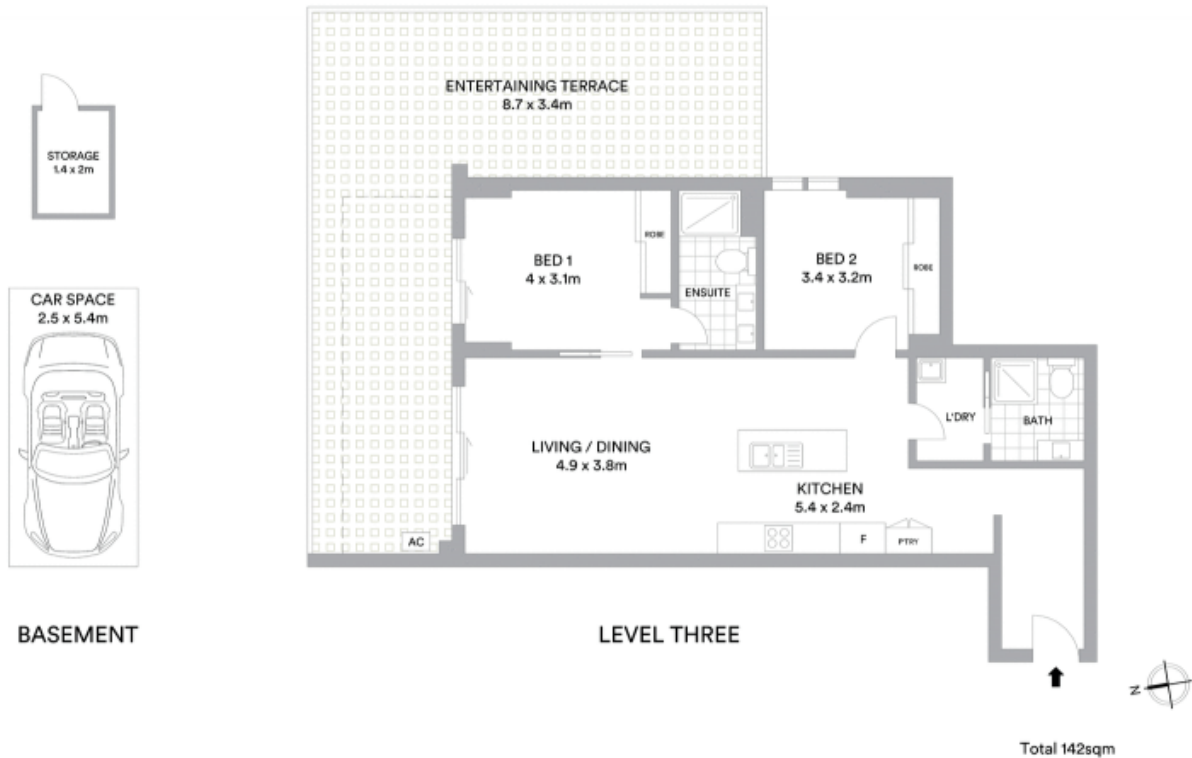
**Glen Craigie**

0401 529 930



**Glen Craigie**

0401 529 930



**BASEMENT**

**LEVEL THREE**

Total 142sqm

**McGrath**

Scale in metres. Indicative only. All information contained herein is obtained from sources we believe to be accurate. We cannot guarantee its accuracy. Interested persons should make and rely on their own enquiries