

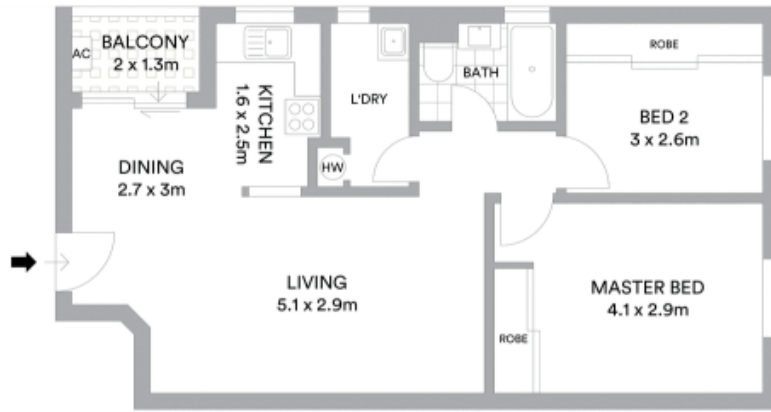
16/12 Goulburn Street Warwick Farm, NSW 2 1 1

Top Floor Bright And Stylish

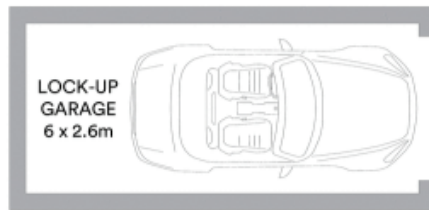
Top floor apartment nestled in convenient locale
Enhanced by comfortable finishes and contemporary appeal, this top floor apartment provides low maintenance living in a convenient address. It's in a gated complex within walking distance of bus stops, Liverpool Hospital and Warwick Farm train station.

Price: \$300 per week
Bond: \$1,200
Available Date: 26/10/2019

Stone Real Estate
02 9824 1100
Liverpool



TOP LEVEL



GROUND LEVEL



McGrath

Scale in metres. Indicative only. All information contained herein is obtained from sources we believe to be accurate. We cannot guarantee its accuracy. Interested persons should make and rely on their own enquiries