

9 Winton Avenue EDENSOR PARK, NSW 5 3 2

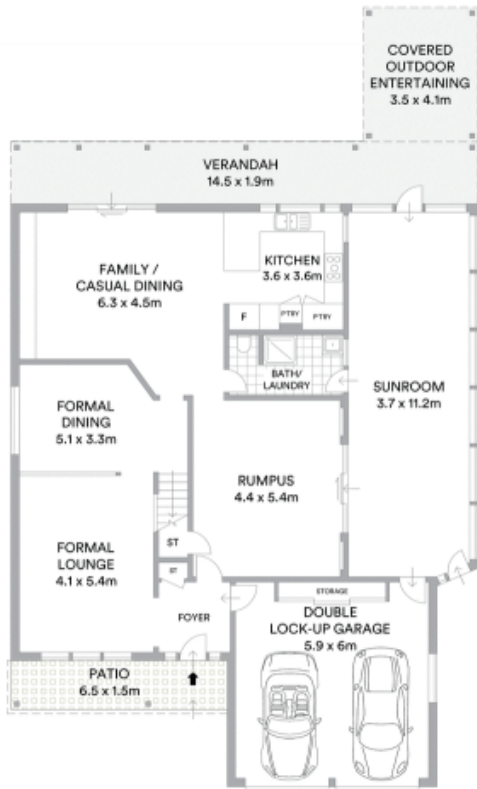
### Treasured family entertainer set on corner block

Merging clever design with quality construction, this fantastic home features deluxe accommodation and an impressive choice of entertaining areas. It covers a large corner block in a family-friendly neighbourhood, set a walk from schools, shops and buses.

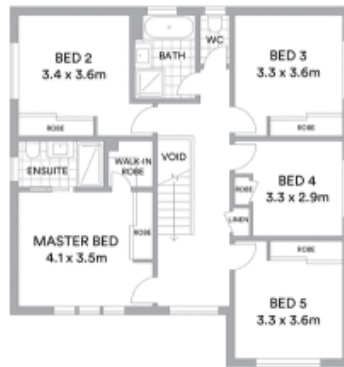
- Cherished home on the market for the first time in 25 years
- Quality design/build by Krslovic Homes with recent updates
- Floorplan presents formal and casual lounge and dining areas
- Covered outdoor entertaining area overlooks easycare garden
- Upgraded CaesarStone kitchen has integrated espresso machine
- Bedrooms with built-in wardrobes featuring a master suite
- Rumpus room with projector and screen for family movie nights
- Bamboo floors, plantation shutters, custom television unit

Stone Real Estate

02 9824 1100  
Liverpool



GROUND LEVEL



UPPER LEVEL



**McGrath**

Scale in metres. Indicative only. All information contained herein is obtained from sources we believe to be accurate. We cannot guarantee its accuracy. Interested persons should make and rely on their own enquiries