



8 Marvell Road WETHERILL PARK, NSW



Stylish family haven in a prized location

Placed on an optimum 556sqm north facing corner block, this family home has been tastefully renovated to showcase a contemporary aesthetic. It enjoys a blue ribbon address, footsteps from popular schools, Wetherill Park Shopping Centre and Stocklands.

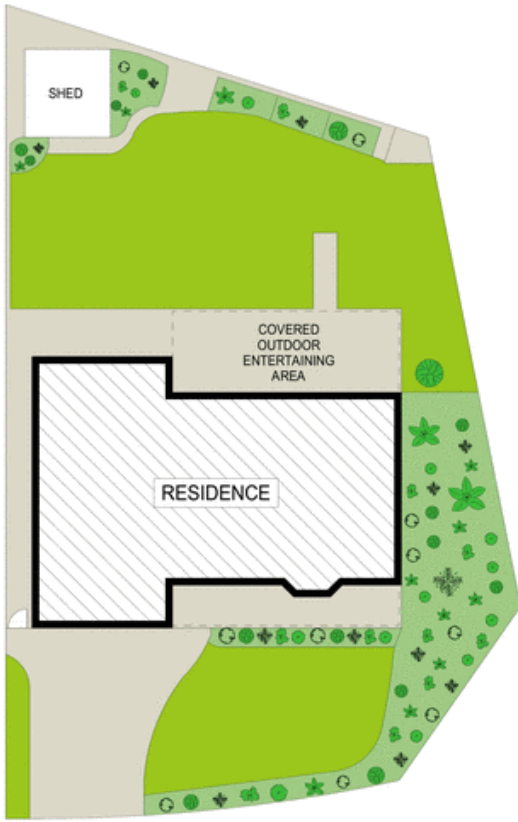
- Set at the end of a cul-de-sac in a highly sought-after hub
- Flawlessly presented with sleek tiled floors throughout
- Perfect for families that need plenty of room to enjoy life
- Outdoor flow to expansive pergola covered entertaining area
- Expansive yard offers room for a pool or granny flat (STCA)
- New kitchen with European appliances and Caesarstone benches
- Built-ins to bedrooms, master with large walk through robe
- Gas heating, formal lounge and dining, fully tiled bathrooms

Price:

Price \$739,000

Stone Real Estate

02 9824 1100
Liverpool



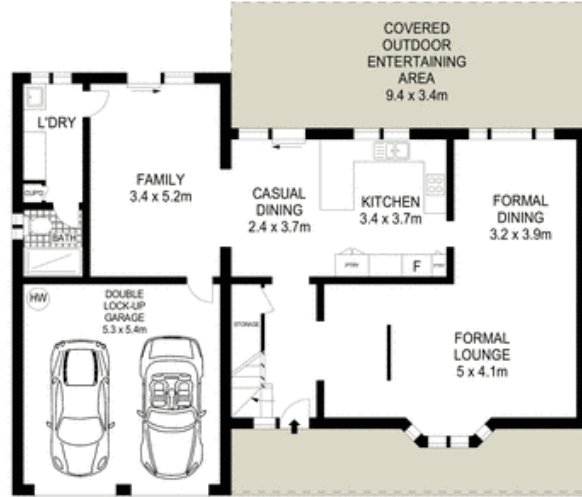
SITE PLAN (NOT TO SCALE)



Scale in metres. Indicative only. Dimensions are approximate. All information contained herein is gathered from sources we believe to be reliable. However we cannot guarantee its accuracy and interested persons should rely on their own enquiries.



FIRST FLOOR



GROUND FLOOR



8 Marvell Road, Wetherill Park

McGrath