



24 Salter Road BOSSLEY PARK, NSW

5

3

2

### A family lifestyle home of style and distinction

This prestige Roselea Homes residence is architect designed and flows over two levels of superior appointed living, effortlessly meeting the demands of a large family. It is situated in a highly desirable street within a stroll from schools and Club Marconi.

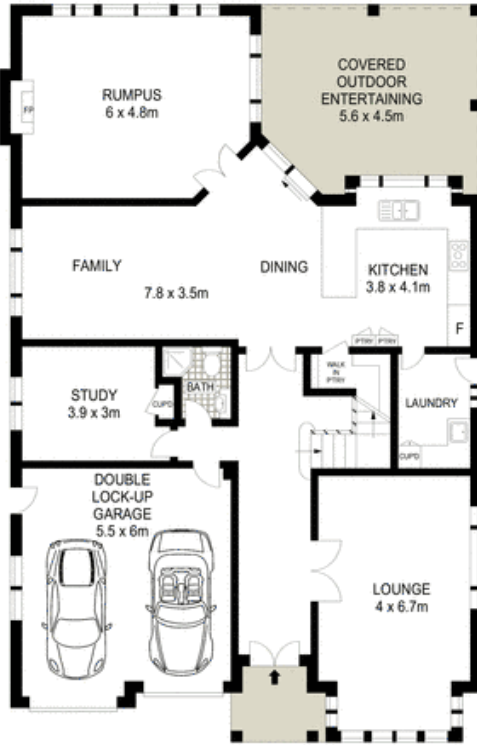
- Timber French doors open to a stylish formal lounge area
- Spacious family living/dining area has polished tiled floors
- North aspect covered patio for superb outdoor entertaining
- Solar heated swimming pool in sunlit, child-friendly gardens
- Sleek stone kitchen has European appliances, walk-in pantry
- Generous bedrooms appointed with built-ins, deluxe bathroom
- Luxury master features a walk-in robe, ensuite and a balcony
- Vast rumpus has a gas fireplace, study, downstairs bathroom

**Stone Real Estate**

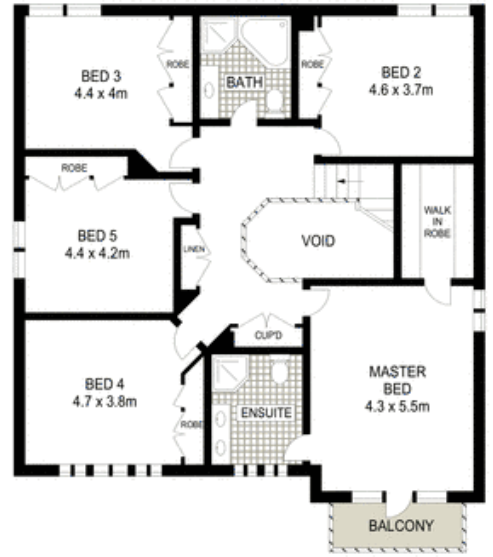
02 9824 1100  
**Liverpool**



SITE PLAN (NOT TO SCALE)



GROUND FLOOR



FIRST FLOOR

0 1 2 3 4 5

Scale in metres. Indicative only. Dimensions are approximate. All information contained herein is gathered from sources we believe to be reliable. However we cannot guarantee its accuracy and interested persons should rely on their own enquiries.



24 Salter Road, Bossley Park

**McGrath**